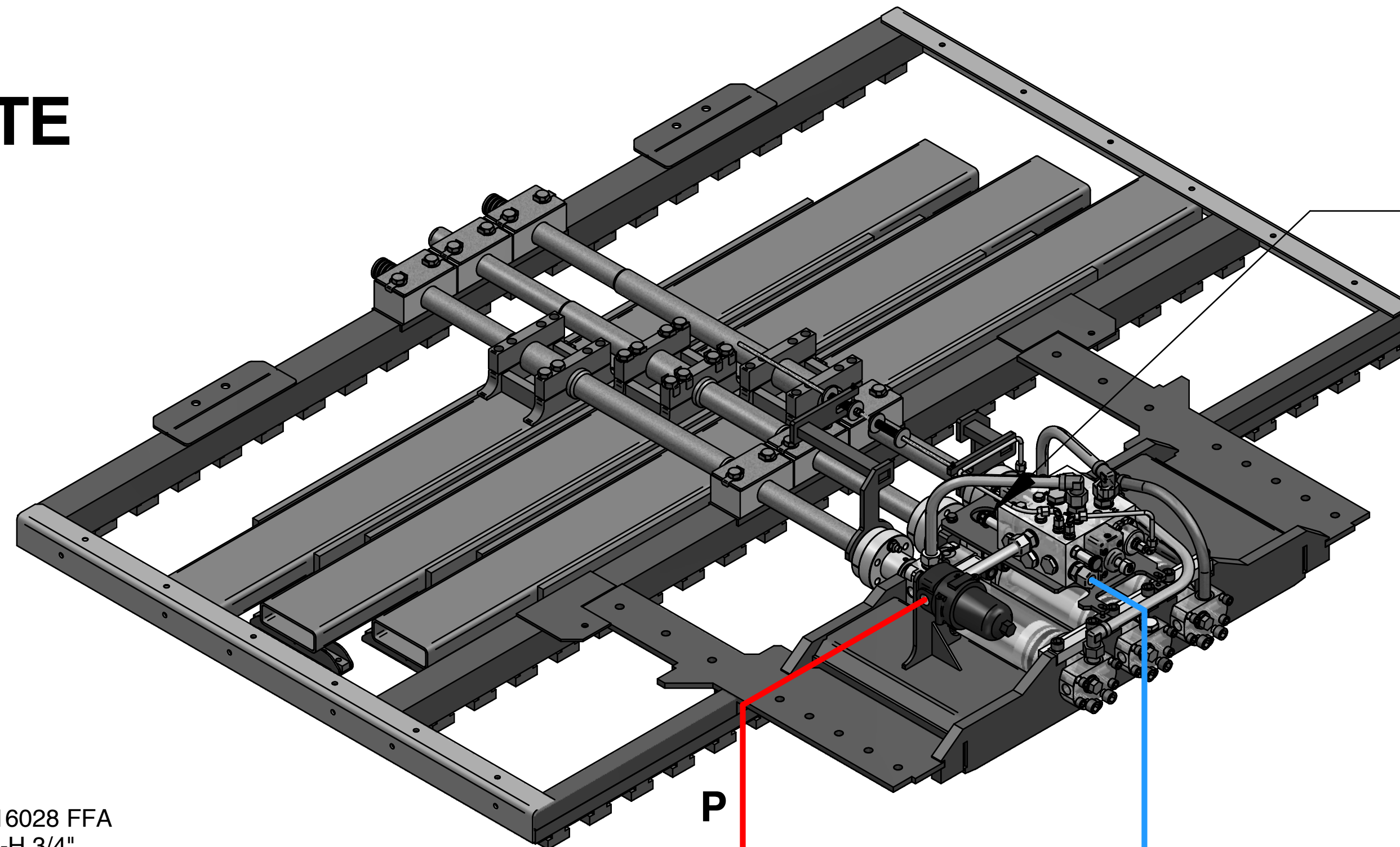


PISO MÓVIL ALITE HEAVY DUTY



 Ajuste válvula
seguridad
250 bar

 Valve setting
security
250 bar

 Réglage de la vanne
Sécurité
250 bars

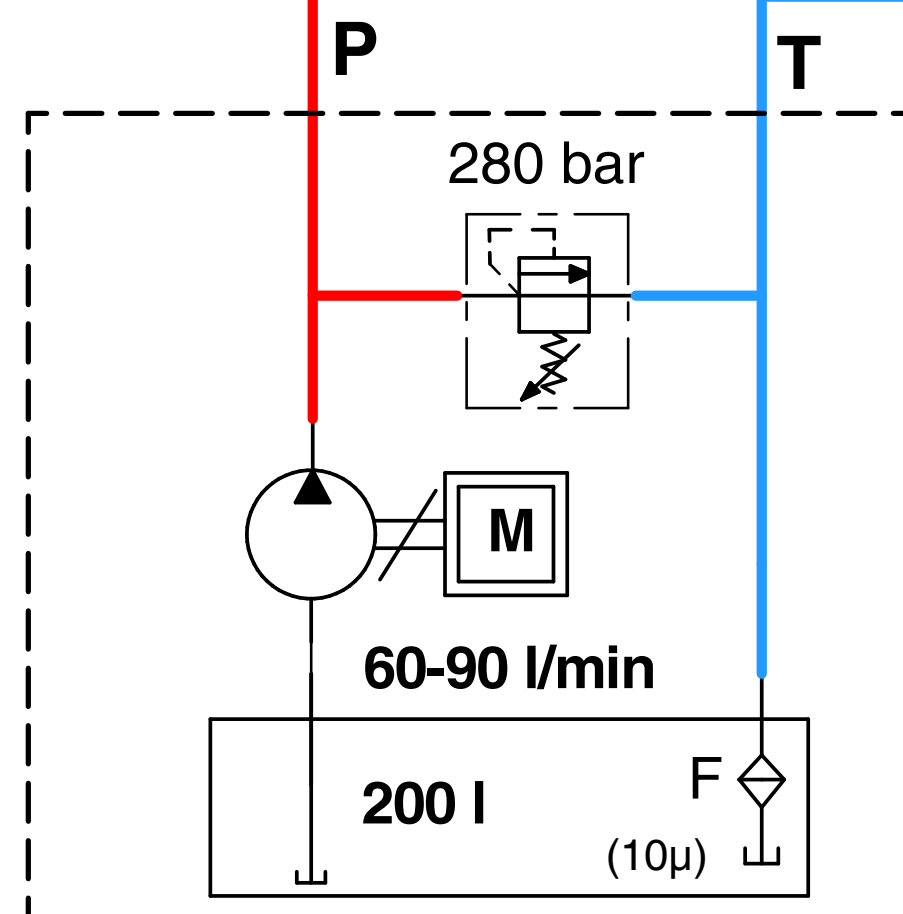
ISO 16028 FFA
M-H 3/4"

ISO 16028 FFA
M-H 1"

TUBO HIDRÁULICO Ø22 / LATIGUILLO 3/4" 4SN

TUBO HIDRÁULICO Ø28 / LATIGUILLO 1" 2SN

AL-BL100



 **INSTALACIÓN
HIDRÁULICA
TRACTORA**

 **INSTALLATION
HYDRAULICS
TRACTOR**

 **INSTALLATION
HYDRAULIQUE
TRACTEUR**

 **CAPACIDAD MÍNIMA
ACEITE 200 L**

 **MINIMUM CAPACITY
OIL 200 L**

 **CAPACITÉ MINIMALE
HUILE 200 L**

