



**TO INCREASE THE FLEXIBILITY
OF YOUR LOADING PROCESS**



e9*2007/46

The ALITE semi-trailer with moving floor and open box with configurable side access doors to load as you want.

ACCESSIBILITY



SIDE LOADING

DOORS WITH 4 FOLDING LEAVES WITH 6,250 mm OF USEFUL SIDE PASSAGE WIDTH

With the maximum lateral opening provided by the model with two sets of side doors, you can load large goods with forklifts.





FULLY CONFIGURABLE

Transport your pallets of any size quickly and safely. We can offer you 1, 2, 3 or 4 sets of side doors for a complete total access that adjusts to your needs or your clients.



DO NOT LOSE ANY CUSTOMERS
ALITE'S LD FAMILY IS SO VERSATILE THAT IT
GUARANTEES YOU MORE CARRYING



**CHOOSE THE QUANTITY AND
POSITION OF THE SIDE DOORS
AS YOU WANT**

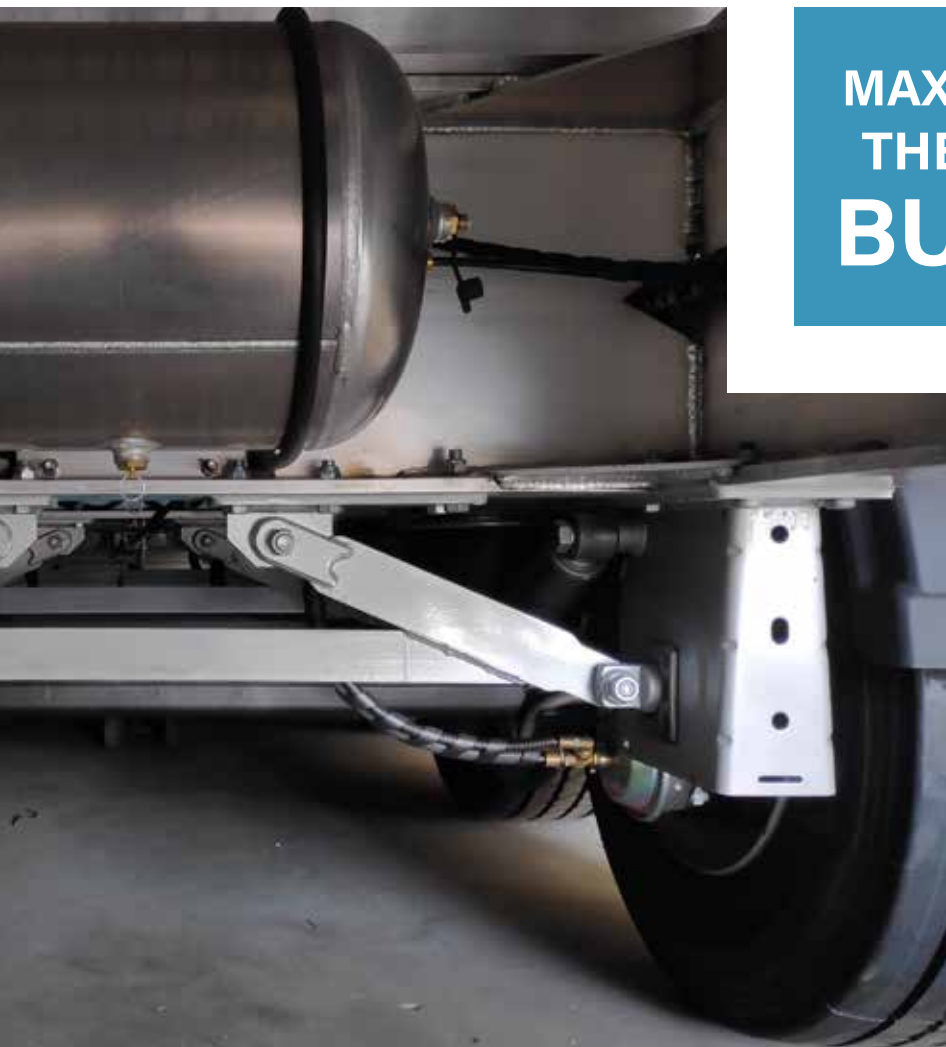
STRONG



ROBUST CHASSIS

Our Lateral Doors (LD) semi-trailer incorporates an extremely robust aluminum chassis, with a 450mm high double T-beam section. Depending on the side door configuration you choose, each model has an optimized chassis neck height to give you the best strength-to-payload ratio.





**MAXIMUM PRODUCTIVITY AND PROFITABILITY FROM
THE FIRST DAY AND THROUGHOUT ITS LIFETIME.
BUILT TO LAST MANY YEARS**

FOLDING DOORS WITH 3 LOCKS PER LEAF

Each wing of the side doors has 3 recessed locks to guarantee maximum resistance and the best possible fit. The profiles of the frames are made of extruded aluminum of our own design and integrate the rotation axes of the bolts. The stainless steel hinged construction ensures durability and lower maintenance costs.

REDUCE EFFORT

Our innovative and exclusive system of bracing and fixing the axles to the chassis beams is optimized to minimize the stresses and loads transmitted to the chassis. The high height of the chassis section considerably reduces the height of the suspension brackets, so that the transmitted loads are minimal.



LIGHT



LIGHTWEIGHT ALUMINUM MANUFACTURING

The vehicle is made almost entirely of aluminum, with the exception of the coupling pivot mounting plate and the suspension brackets and their bracing. These elements are bolt-on with double paint insulation and an insulating polymer adhesive.

BENEFIT FROM ITS LOW EMPTY WEIGHT LOAD THE MAXIMUM

FUEL SAVINGS

The aluminum construction allows us to offer you the lowest unladen weight to reduce the cost per kilometer made due to the vehicle's low unladen weight.



RESISTANT

The background image shows a factory floor with several long, silver aluminum extrusion beams laid out on a workbench. In the background, a red industrial machine, likely a WaterJet, is visible. The scene is well-lit, and the beams are arranged in a way that shows their length and profile. The overall tone is industrial and professional.

ALUMINUM EXTRUSION BEAMS

The best aluminum welding is the one that is not done. For this reason, we assemble all the main structural aluminum profiles of direct extrusion in one piece without welding. We can offer you the best possible finish; in addition to a vehicle with the longest useful life.

COLD CUT

The main chassis girders are cut using a high pressure water cold cutting process (WaterJet). This avoids the unwanted heating of other welding or cutting processes that reduce its resistance by altering the heat treatment of the aluminum alloy.



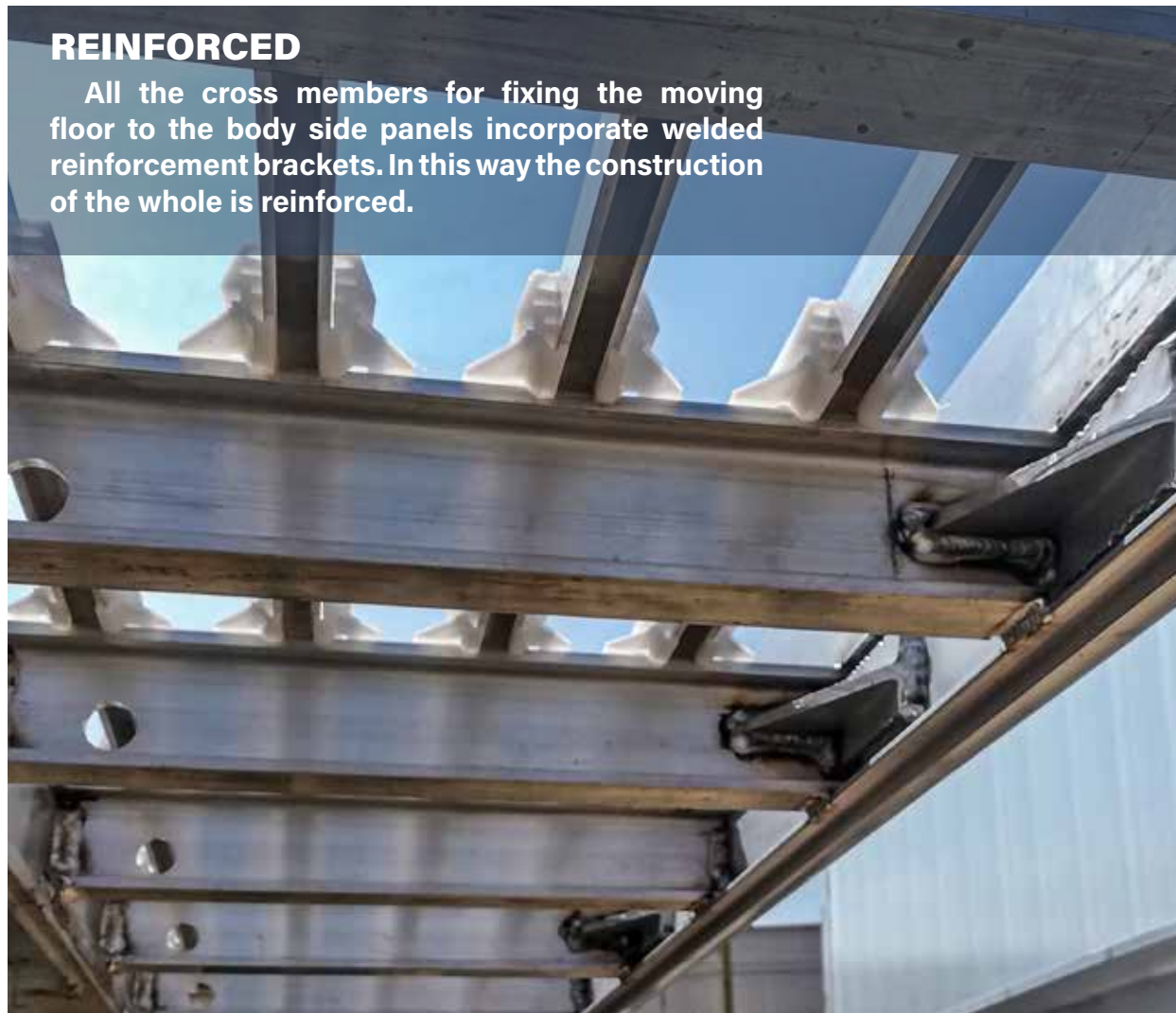
SOLID CONSTRUCTION

The reinforcement cross members in the area of the chassis coupling pivot are welded and machined. In this way, the strength of the joint does not depend solely on the welding process. This achieves greater resistance to fatigue.

ALITE IS A SAFE INVESTMENT THE BEST ALLY FOR YOUR BUSINESS

REINFORCED

All the cross members for fixing the moving floor to the body side panels incorporate welded reinforcement brackets. In this way the construction of the whole is reinforced.



LARGE VOLUME

The image shows the interior of a large moving floor semi-trailer. The walls are made of vertical metal panels, and the floor is a flat, light-colored surface. A blue and yellow tarp is visible on the right side, partially covering the wall. The ceiling is a white, translucent material supported by a metal frame. The overall impression is of a spacious, industrial interior.

MAXIMUM INTERIOR WIDTH

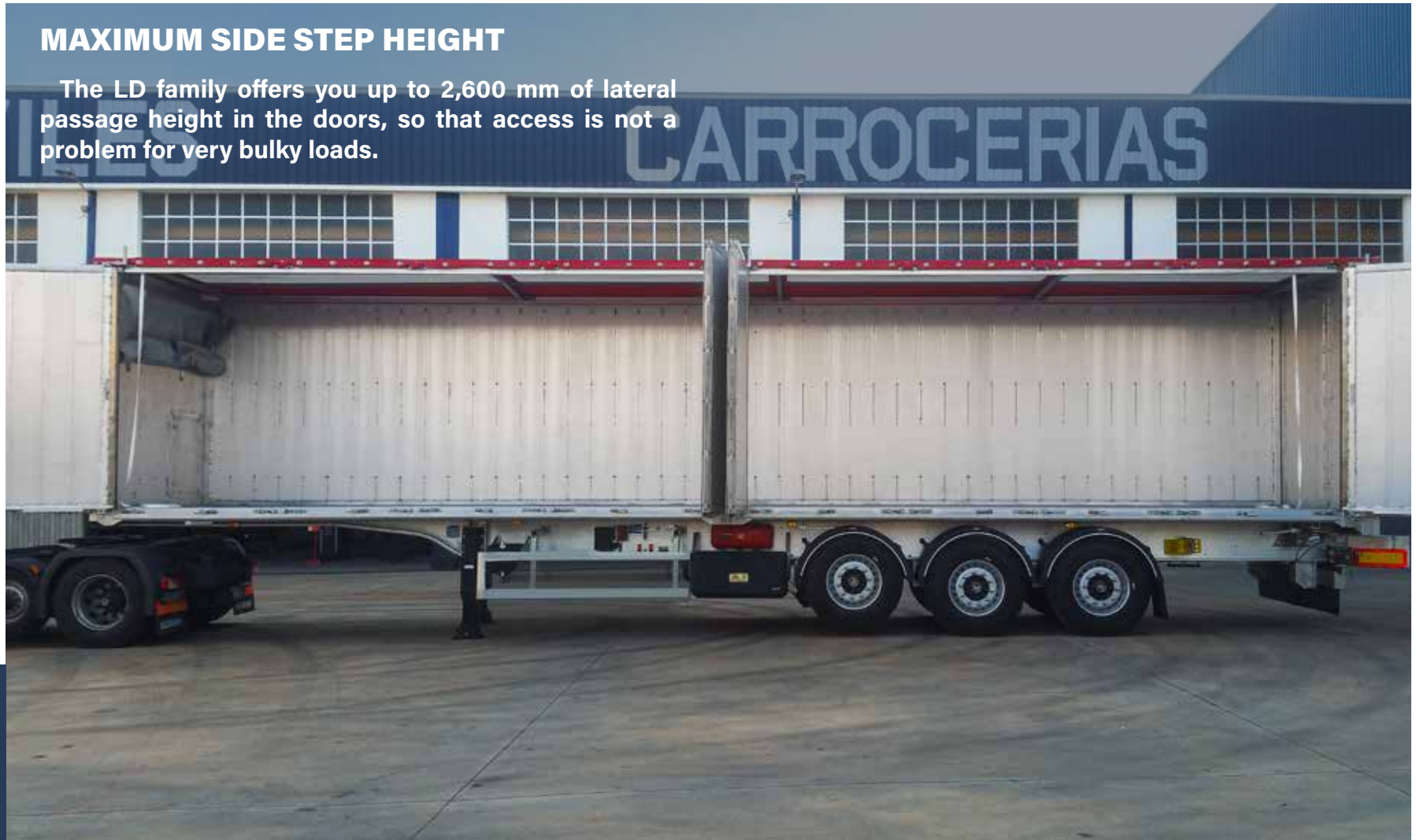
The side doors do not detract from the payload performance of the moving floor semi-trailer. The useful interior width is 2,480 mm so it can be palletizable.

IMPROVE YOUR INCOME

DO NOT LOSE CHARGING POSSIBILITIES

MAXIMUM SIDE STEP HEIGHT

The LD family offers you up to 2,600 mm of lateral passage height in the doors, so that access is not a problem for very bulky loads.



RELIABLE



OWN MANUFACTURING

We manufacture our own moving floor machine. We can offer you the best guarantee. Design aimed at reducing maintenance costs. We control the entire product.

**SO ROBUST
AND RESISTANT
THAT WE CAN
OFFER YOU
THE BEST
GUARANTEE(*)**

8 YEARS WARRANTY ON BPW AXLES (5 + 3) ON-ROAD USE

+

4 YEARS WARRANTY ON THE CHASSIS STRUCTURE

+

2 YEARS WARRANTY ON THE WALKING FLOOR MACHINE



WALKING FLOOR SUITABLE FOR THE PASSING OF VEHICLES

The minimum distance between crossbars and the mounting of sliding blocks with a base tube on all crossbars improves the sliding of the sheets and allows the passage of forklifts.

(*)You can consult our guarantee Policy at www.grupo-alite.eu

FAMILY LD BACK

THE WALKING FLOOR SEMI-TRAILER WITH 1 OR 2 SETS OF SIDE DOORS IN THE REAR.

Our design, manufacture and total control of the manufacture of the vehicle allows us to offer you the greatest possibilities for customization; according to the type of load, use and preferences. Depending on the height of the coupling pin and its load capacity, we can distinguish two models of the LD BACK family: KP HIGH and KP LOW.



The vehicles of the LD BACK family allow the mounting of 1 or 2 sets of 4-leaf doors at the rear of the semi-trailer. They have characteristics that make it one of the most robust on the market in its segment to guarantee maximum safety on the most difficult terrain and loads. It is the ideal vehicle for loading and unloading bulk products and standard or large pallets.



You can configure the vehicle with the multiple options available to adapt it to your purpose according to your preferences. Our proposal starts from a base vehicle with various selectable options. We are a flexible factory with complete autonomy in the production of all components. You can see the complete information with ALL the possibilities in its technical sheet.

YOU CAN FIND THE TECHNICAL SHEET ON OUR WEBSITE WWW.GRUPO-ALITE.EU

**FOR DRY BULK LOADS AND / OR STANDARD
OR SPECIAL DIMENSIONS PALLETS.**

BACK FAMILY MODELS

With 1 or 2 sets of doors at the rear.



LD BACK KP-LOW

For dry bulk and / or palletizable cargo for a fifth wheel height on the tractor of 1,100 to 1,150 mm. Maximum load on the coupling pin (KP) of 12 tn. Assemble 1 or 2 sets of 4-leaf doors at the rear. Free passage height on the sides of 2,580 mm with a KP height of 1,120 mm.



LD BACK KP-HIGH

For dry bulk and / or palletizable cargo for a fifth wheel height on the tractor of 1,200 to 1,250 mm. Maximum load on the coupling pivot (KP) of 16 tn. Assemble 1 or 2 sets of 4-leaf doors at the rear. Clearance height on the sides of 2,500 mm with a KP height of 1,200 mm.

**CHOOSE THE MODEL THAT BEST SUITS YOUR TRACTOR HEAD OR APPLICATION.
SEMI-TRAILER WITH 385/65 R22.5 TIRES. OPTIONAL 385/55 R22.5.**

LD FRONT

**THE WALKING FLOOR SEMI TRAILER THAT
CAN MOUNT UP TO 3 SETS OF SIDE DOORS.**

Our design, manufacture and total control of the manufacture of the vehicle allows us to offer you the greatest possibilities for customization; according to the type of load, use and preferences. This model mounts 1 set of side doors on the front right or left and up to 2 sets of side doors on the rear.



The LD Front model has a continuous chassis with a reinforced 80 mm high neck to be able to operate with guarantees 1 set of side doors at the front. Maximum load on the coupling pin (KP) of 12 tn. Clearance height on the sides of 2,530 mm with a KP height of 1,120 mm.



You can configure the vehicle with the multiple options available to adapt it to your purpose according to your preferences. Our proposal starts from a base vehicle with various selectable options. We are a flexible factory with complete autonomy in the production of all components. You can see the complete information with ALL the possibilities in its technical sheet.

YOU CAN FIND THE TECHNICAL SHEET ON OUR WEBSITE WWW.GRUPO-ALITE.EU

**CHOOSE THE MODEL THAT BEST SUITS YOUR TRACTOR HEAD OR APPLICATION.
SEMI-TRAILER WITH 385/65 R22.5 TIRES. OPTIONAL 385/55 R22.5.**

LD COMPLETE

THE MOVING FLOOR SEMI-TRAILER WITH LD COMPLETES UP TO 4 SETS OF SIDE DOORS.

Our design, manufacture and total control of the manufacture of the vehicle allows us to offer you the greatest possibilities for customization; according to the type of load, use and preferences. This model mounts 1 or 2 sets of side doors at the front and up to 2 sets of side doors at the rear.

The LD Complete model has a continuous chassis with a reinforced 140 mm high neck to be able to operate with guarantees up to 2 sets of side doors at the front. Maximum load on the coupling pin of 16 tn. Free passage height on the sides of 2,390 mm with a KP height of 1,120 mm.



You can configure the vehicle with the multiple options available to adapt it to your purpose according to your preferences. Our proposal starts from a base vehicle with various selectable options. We are a flexible factory with complete autonomy in the production of all components. You can see the complete information with ALL the possibilities in its technical sheet.

YOU CAN FIND THE TECHNICAL SHEET ON OUR WEBSITE WWW.GRUPO-ALITE.EU

**CHOOSE THE MODEL THAT BEST SUITS YOUR TRACTOR HEAD OR APPLICATION.
SEMI-TRAILER WITH 385/65 R22.5 TIRES. OPTIONAL 385/55 R22.5.**

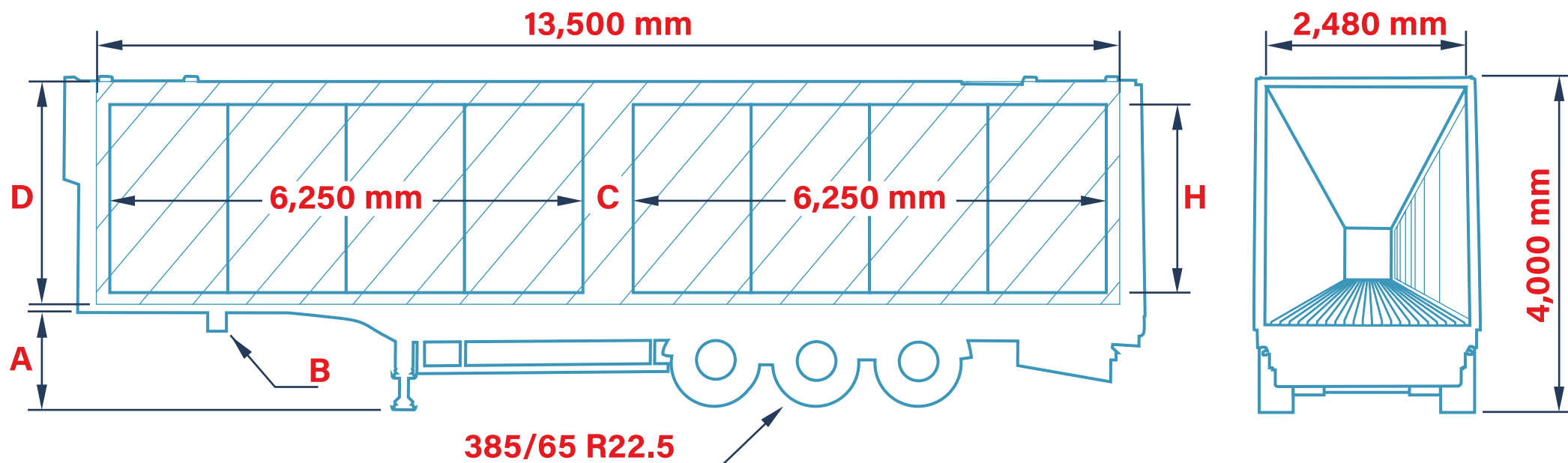
TECHNICAL COMPARISON

In the following table, a comparison will be made according to the technical characteristics of the vehicles seen above, that is, of the two models Conical Full, Conical High, Light and Volume.

| | VALUE MODEL | A HEIGH KP (mm) | B TPMM KP * (kg) | C USEFUL VOLUME (m³) | D USEFUL HEIGHT (mm) | H CLEAR DOORWAY HEIGHT (mm) | FD FRONT DOOR (*) | RD REAR DOOR (*) | EMPTY WEIGHT STANDARD VERSION (FD-RD)(kg) |
|---|-----------------------------------|--------------------------|------------------------|-------------------------------|-------------------------------|--------------------------------------|-------------------------|------------------------|---|
| 1 | LD BACK KP LOW (MAX. 2 DOORS) | 1,120 (1,100 - 1,150) | 12,000 | 91.4 | 2,730 | 2,580 | 0 | 1 or 2 | 7,650 + 124 (0 - 1) |
| 2 | LD BACK KP HIGH (MAX. 2 DOORS) | 1,200 (1,200 - 1,250) | 16,000 | 88.7 | 2,650 | 2,500 | 0 | 1 or 2 | 7,780 + 124 (0 - 1) |
| 3 | LD FRONT (MAX. 3 DOORS) | 1,120 (1,100 - 1,150) | 12,000 | 89.7 | 2,680 | 2,530 | 1 | 0, 1 or 2 | 7,620 +124 (1 - 0) |
| 4 | LD COMPLETE (MAX. 4 DOORS) | 1,200 (1,200 - 1,250) | 16,000 | 85.0 | 2,540 | 2,390 | 1 or 2 | 0, 1 or 2 | 7,760 + 124 + 124 (1 - 1) |

*TPMM = Technically Permissible Maximum Mass.
*DOOR = Access formed by four (4) leaves with opening of two (2) leaves on one side and other two (2) leaves on the opposite side.

Here is an outline that can help you:



IF YOU NEED MORE INFORMATION,
ASK US FOR THE TECHNICAL
DATA VEHICLE THAT YOU WANT
AND YOU WE WILL SHIP WITHOUT
COMMITMENT. YOU CAN ALSO
DOWNLOAD IT EASY AND QUICKLY
ON OUR WEBSITE:

WWW.GRUPO-ALITE.EU



THE BEST STANDARD EQUIPMENT

1 ROLLER ROOF HANDBOOK

Roll-up canvas roof 680 g / m² manual type with 600 mm drop to the side left in running order and fixed with ratchets on the side law.

2 SWEEPING CANVAS

Tarpaulin canvas mounted on a bar with sliding carriages. The caroches are of stainless steel and Montana standard type bearings easily removable for maintenance simple.



Hydraulic valve of own manufacture to avoid problems caused by wrong connection when exchanging the pressure hose by the return hose. I know prevent breakdowns in walking floor equipment.

3 SECURITY VALVE



Panel for monitoring the parameters and warnings of the vehicle's brake system. Incorporates the scale function for the tridem.

4 INFORMATION DISPLAY



5

BAYONETS

Depending on the configuration of the doors chosen, we mount bayonets in aluminum or steel.

**TOWING RINGS**

6

Two towing eyes on the rear bolted to the chassis beams.



7

WALKING FLOOR CONTROL PANEL

To control the walking floor, it includes:

- Control panel with panel and keypad
- Radio control
- Control via cable

**SPARE WHEEL SUPPORT**

8

Wheel bracket spindle type replacement bolted to the chassis.



6

THE BEST STANDARD EQUIPMENT

9 PNEUMATIC LOCK.

Additional pneumatic safety closing system for the rear doors with manual operation with a button on the chassis.



10

AUXILIARY LADDER

12-step aluminum ladder with support on the cyclist lifter.

11

PLANK WEDGES



Cast aluminum welded wedges.

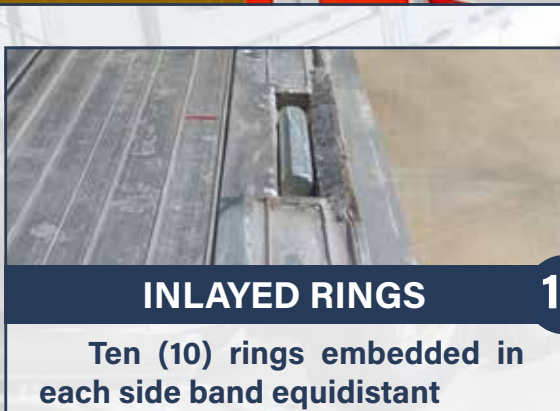
12 INLAYED RINGS

Ten (10) rings embedded in each side band equidistant



13 ACCESS LADDER

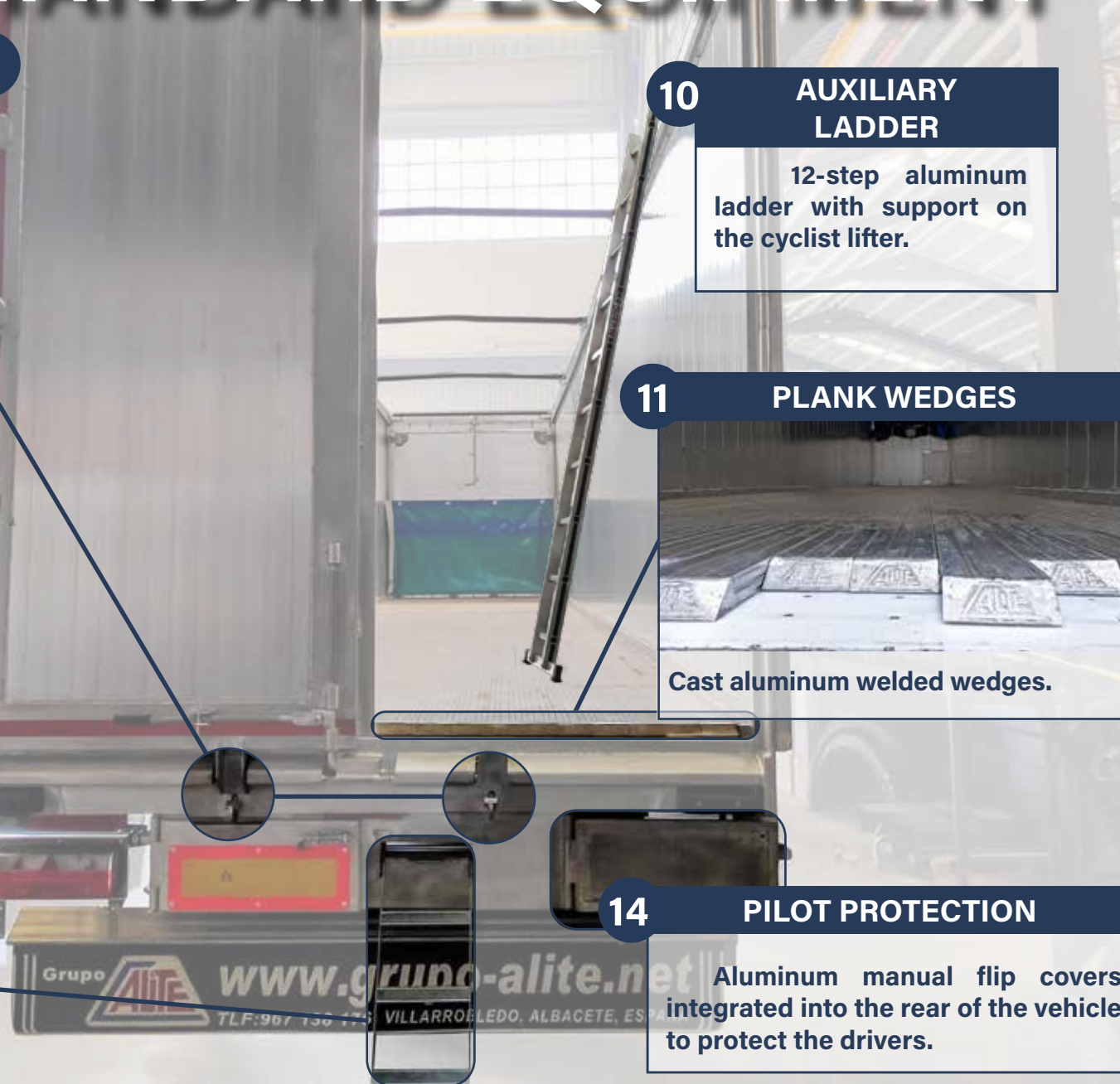
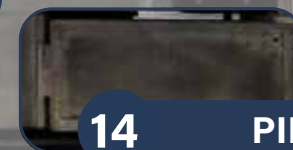
Three-step retractable ladder located at the rear to facilitate access to the interior.



14

PILOT PROTECTION

Aluminum manual flip covers integrated into the rear of the vehicle to protect the drivers.



ARCHES

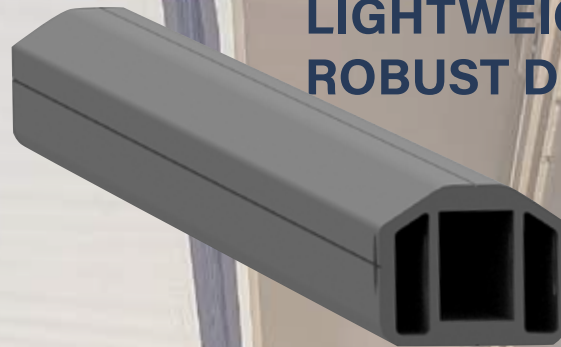
ARCHES

14

ALITE system with 5 arches in 60x50 mm black anodized aluminum extrusion tube.

Flip-up mounting and side swivel for unobstructed access.

LIGHTWEIGHT AND ROBUST DESIGN



SIDE SWIVEL



FOLDING UP



OUR SIDE DOORS

DETAIL



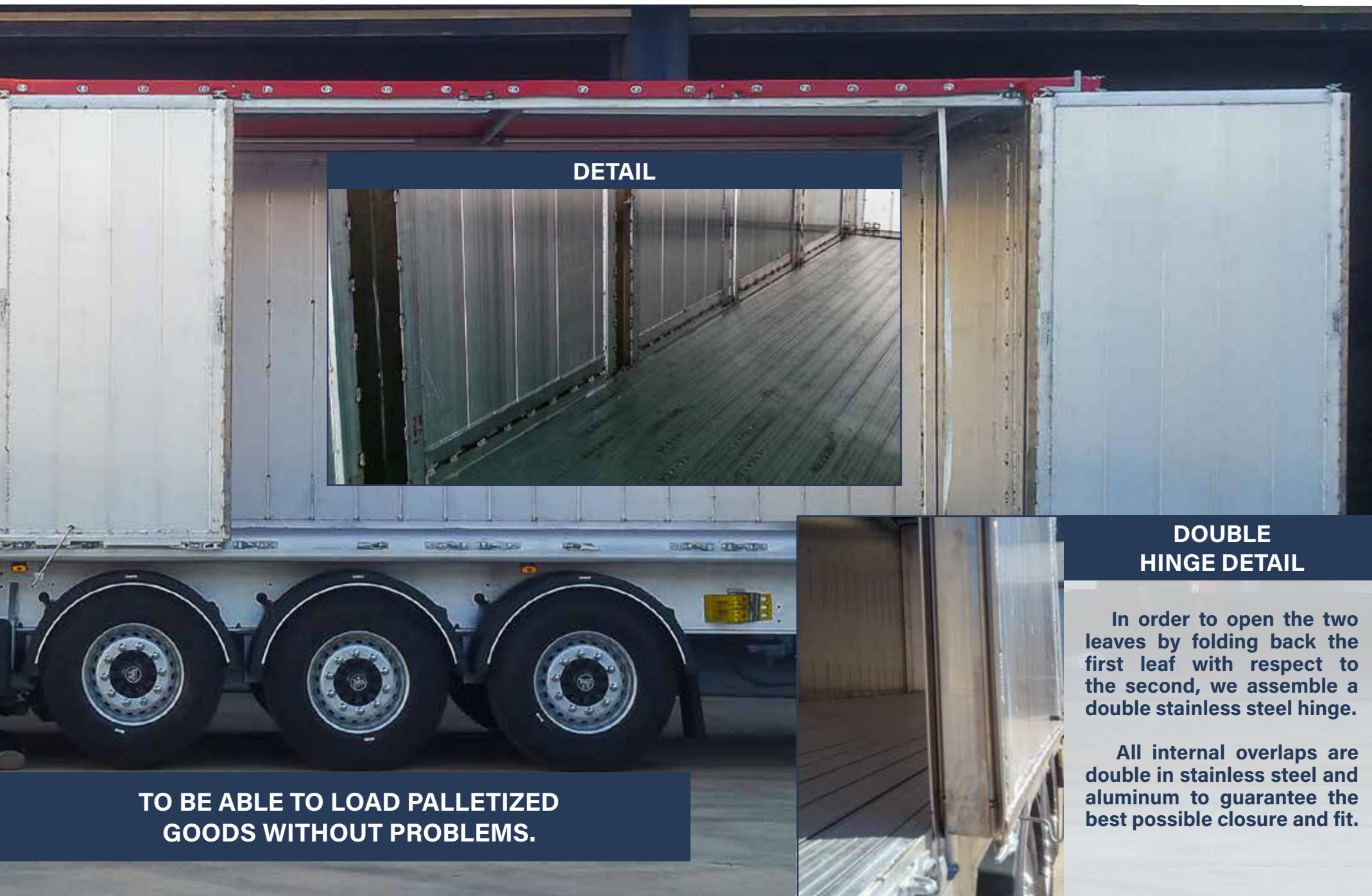
SINGLE
HINGE DETAIL

The door opening hinges are made entirely of AISI 304B stainless steel. The turning axles are made of a solid round with a diameter of 15 mm. The fallebas mount solid round of 18 mm of diameter. All shafts are made of stainless steel.



THE USEFUL INSIDE WIDTH OF THE BODY
WITH SIDE DOORS IS 2,480 mm





DETAIL



DOUBLE HINGE DETAIL

In order to open the two leaves by folding back the first leaf with respect to the second, we assemble a double stainless steel hinge.

All internal overlaps are double in stainless steel and aluminum to guarantee the best possible closure and fit.

**TO BE ABLE TO LOAD PALLETIZED
GOODS WITHOUT PROBLEMS.**

OUR PASSION FOR THE SMALL DETAILS



**MINIMEX PRESSURE
TAPES INTEGRATED IN THE
FRONT SAFETY VALVE TO
CHECK THE OPERATION
OF THE SYSTEM**



**HYDRAULIC TUBES
INTEGRATED ON THE
OUTSIDE OF THE
CROSSBODIES. ACCESS
AND ITS MAINTENANCE IS
EASILY BEING PROTECTED.**



**WALKING FLOOR
MACHINE WITH
INTEGRATED FRAME
TO PREVENT HEAD
LOSS CAUSED BY
DEFORMATION IN THE
CENTRAL AREA OF
THE BODYWORK.**



**INTEGRAL TYPE FENDERS
WITH BUILT-IN SKIRTS
AND HIDDEN FIXING
TUBES.**



REAR DOOR FAILURES WITH FOLDING HANDLE MADE OF STAINLESS STEEL. CLOSING HINGES WITH 15 mm SOLID SHAFT IN STAINLESS STEEL.

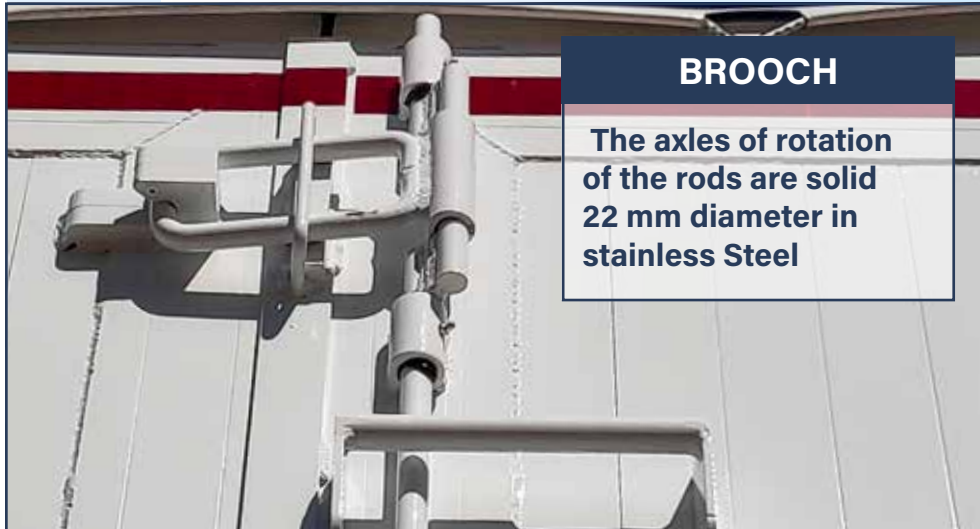


REMOVABLE BEARING WHEELS IN THE CARRIAGES OF THE TROLLEYS FOR FRONT SWEEPERS. ECONOMIC AND SIMPLE SUBSTITUTION.



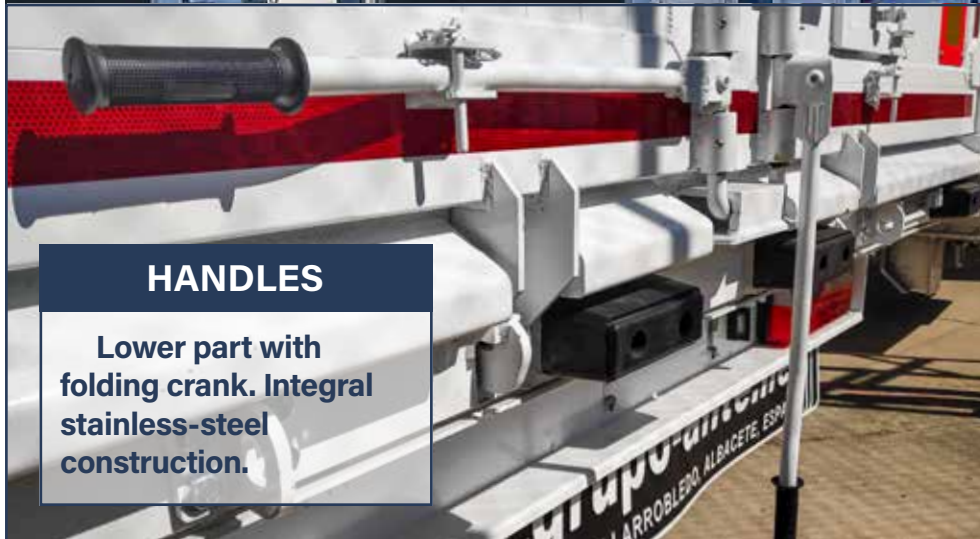
FINISHED IN WATER-BASED ACRYLIC PAINT. MORE RESPECTFUL SYSTEM WITH THE ENVIRONMENT.

REAR DOORS



BROOCH

The axles of rotation of the rods are solid 22 mm diameter in stainless Steel



HANDLES

Lower part with folding crank. Integral stainless-steel construction.



HIGH PERFORMANCE DETAIL

Our rear doors are so robust that they do not need a closure on the upper cross member. Top snap closure prevents need for additional hardware and the use of a double espagnolette. Mounting the top cross member on the doors is optional and is only used to secure the tarp to the ceiling.

ADAPTABILITY

We think down to the smallest detail to guarantee you the greatest satisfaction. For this reason, our designs are in constant innovation to offer you the solution that best suits your needs. We have a wide range of options so you can customize your vehicle.

OPTIONS

ROTATING REAR ALUMINUM CROSSBAR

The left wing of the door incorporates a spring lock for simultaneous opening of the upper cross member with the door wing



ALUMINUM REINFORCED FIXED REAR MELT



HYDRAULIC ROOF TYPE BUTTERFLY WING ALITE OF OWN MANUFACTURE



DRIVES

Simple and robust in-house hydraulic system. Its assembly is modular, bolted and mounts standard double-acting cylinders and a chain.



CEILINGS AND ARCHES

ARQUILLAS WITH SPRING CLOSURE



REINFORCED ARQUELS



FRONT ACCESS DOOR



COMPLETE INTERIOR REINFORCEMENT



REINFORCEMENT



PARTIAL INTERIOR REINFORCEMENT

**REINFORCED SHEETS
6, 8 or 10 mm THICKNESS**



**STAINLESS STEEL REAR
SLIDE PLATE.**



ADAPTABLE BOX HEIGHT: FROM 1,400 TO 3,000 mm



ADAPTABLE BOX LENGTH: FROM 10,000 TO 13,650 mm



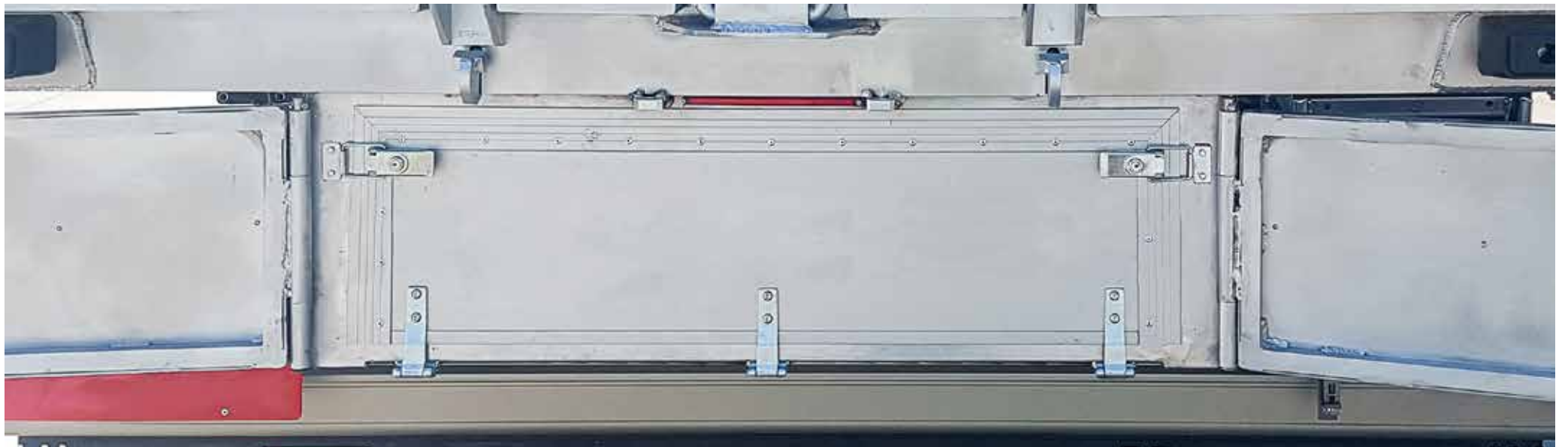
EXTENSIBLE STEEL ANTI-STOPPING

COACHWORK



RECORD FOR GRAIN IN STAINLESS STEEL

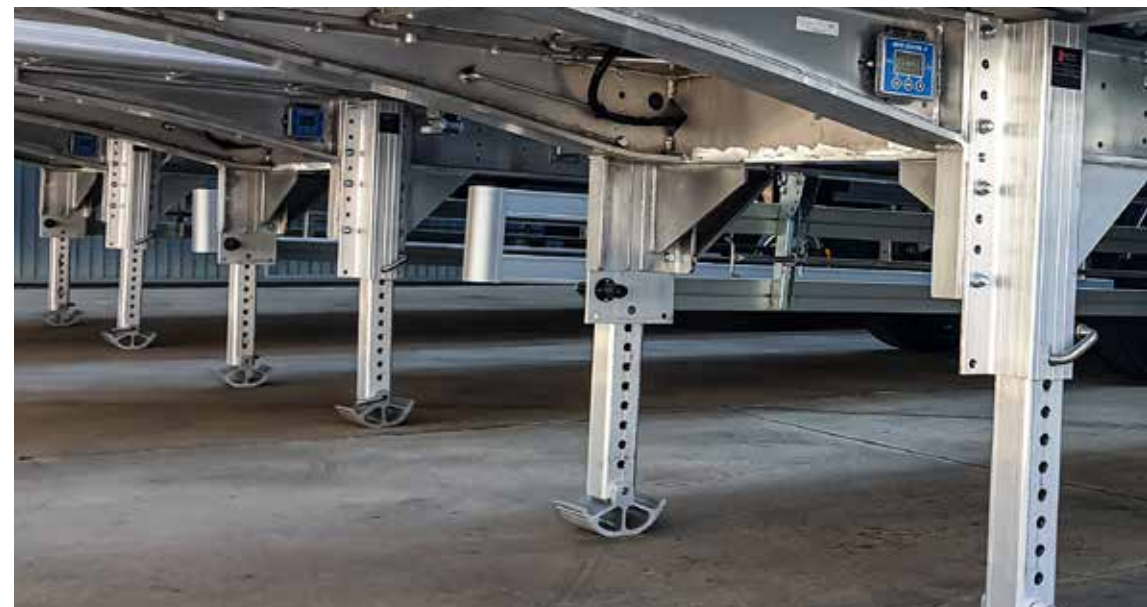
COACHWORK AND OTHERS



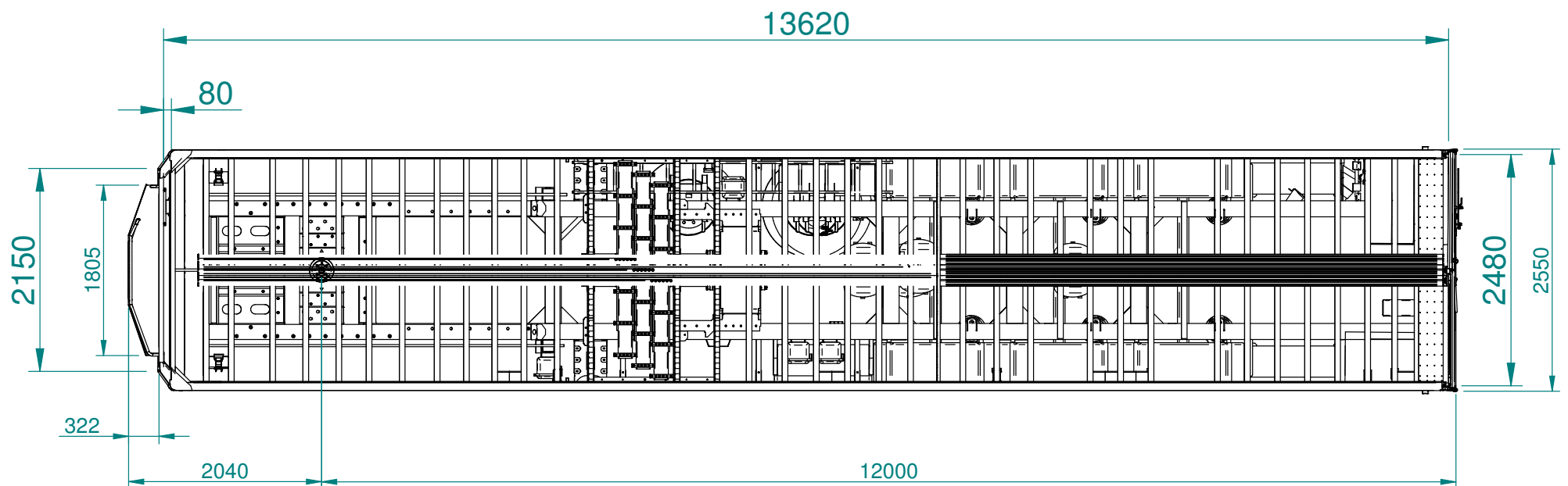
REAR DRAWER BETWEEN CHASSIS



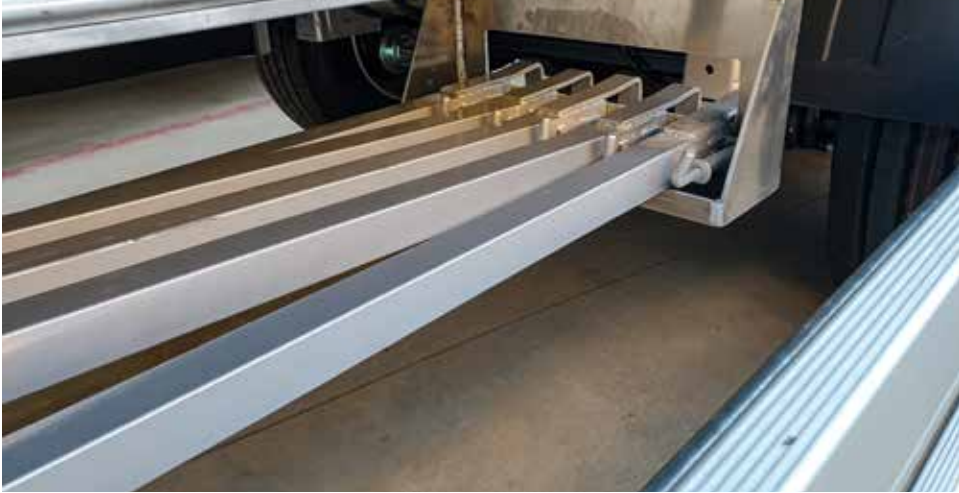
CHANGE USEFUL INTERIOR LENGTH 13,500 TO 13,620 mm WITH INTERNAL CHAMFER



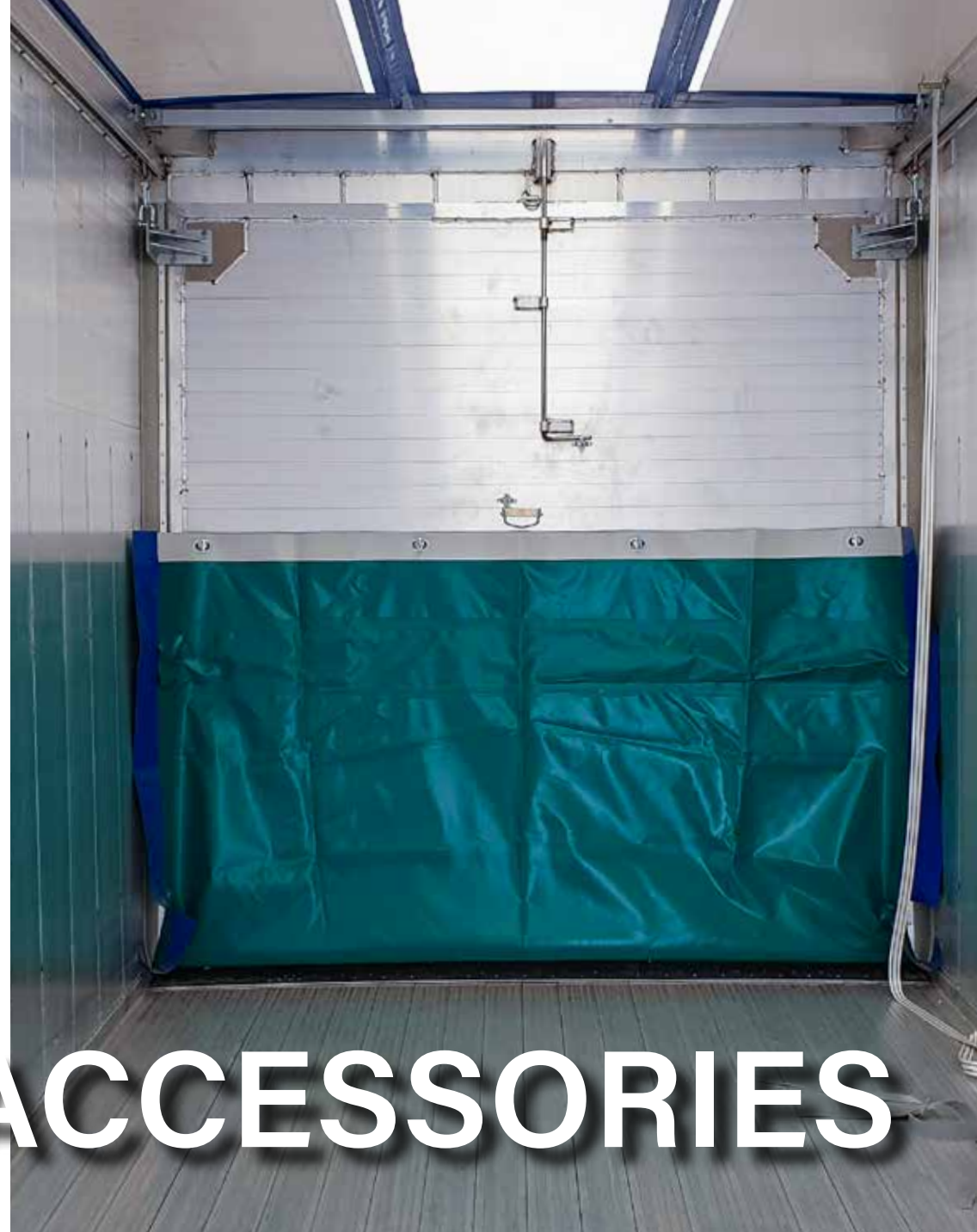
ALUMINUM LEGS WITH MANUAL EXTENSION



SUPPORT FOR ARQUILLAS



INSIDE ALUMINUM WALL



WASHING SYSTEM



ACCESSORIES



ADD ALITE PNEUMATIC ROLLER FOR FRONT SWEEPER



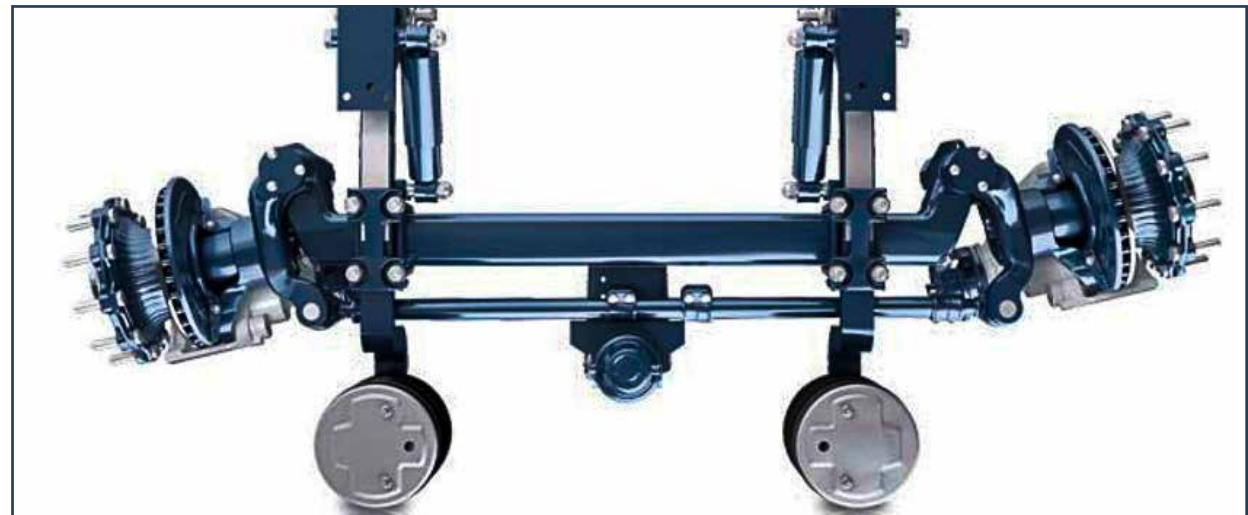
CUSTOMIZED REAR OPTICAL GROUPS



**FINISHED IN ANY RAL
CHARTER COLOR**



**ADD 4 RINGS TO THE CHASIS FOR THE
MOORING OF THE VEHICLE ON BOARD**



SELF-STEERING 3RD AXLE ASSEMBLY BPW WITH BANK

AUTONOMOUS DIESEL ENGINE FOR WALKING FLOOR



REAR DRAWER FOR ACCESSORIES



BPW AIRSAVE SELF-PUMPING SYSTEM





ALITE
000
LATERAL DOORS

MORE INFORMATION IN:
www.grupo-alite.eu/en



FACTORY:

PG IND. CL De la Cierva 16-20
02600 Villarrobledo, Albacete
SPAIN

Phone: +34 967 13 81 76
ofertas@grupo-alite.eu

www.grupo-alite.net