



AHD
000
HEAVY DUTY

FOR CHALLENGING CARGO AND TOUGH TERRAIN

The ALITE semi-trailer with open body and walking floor
for field use (OFF-ROAD) and highway (ON-ROAD).



e9*2007/46

www.grupo-alite.eu
CUSTOMIZABLE M

STRONG





**ALITE IS THE MULTIPURPOSE WALKING FLOOR
THAT GUARANTEES YOU MORE SHIPPING
DRIVE THROUGH DIFFICULT PLACES**

STRONG CHASSIS

Our Heavy-Duty semi-trailer incorporates an extremely robust chassis, with a 450mm double T beam section height. The lowered neck design allows us to offer you the best resistance-volume ratio useful load.



BEAMS - AXLES RATIO

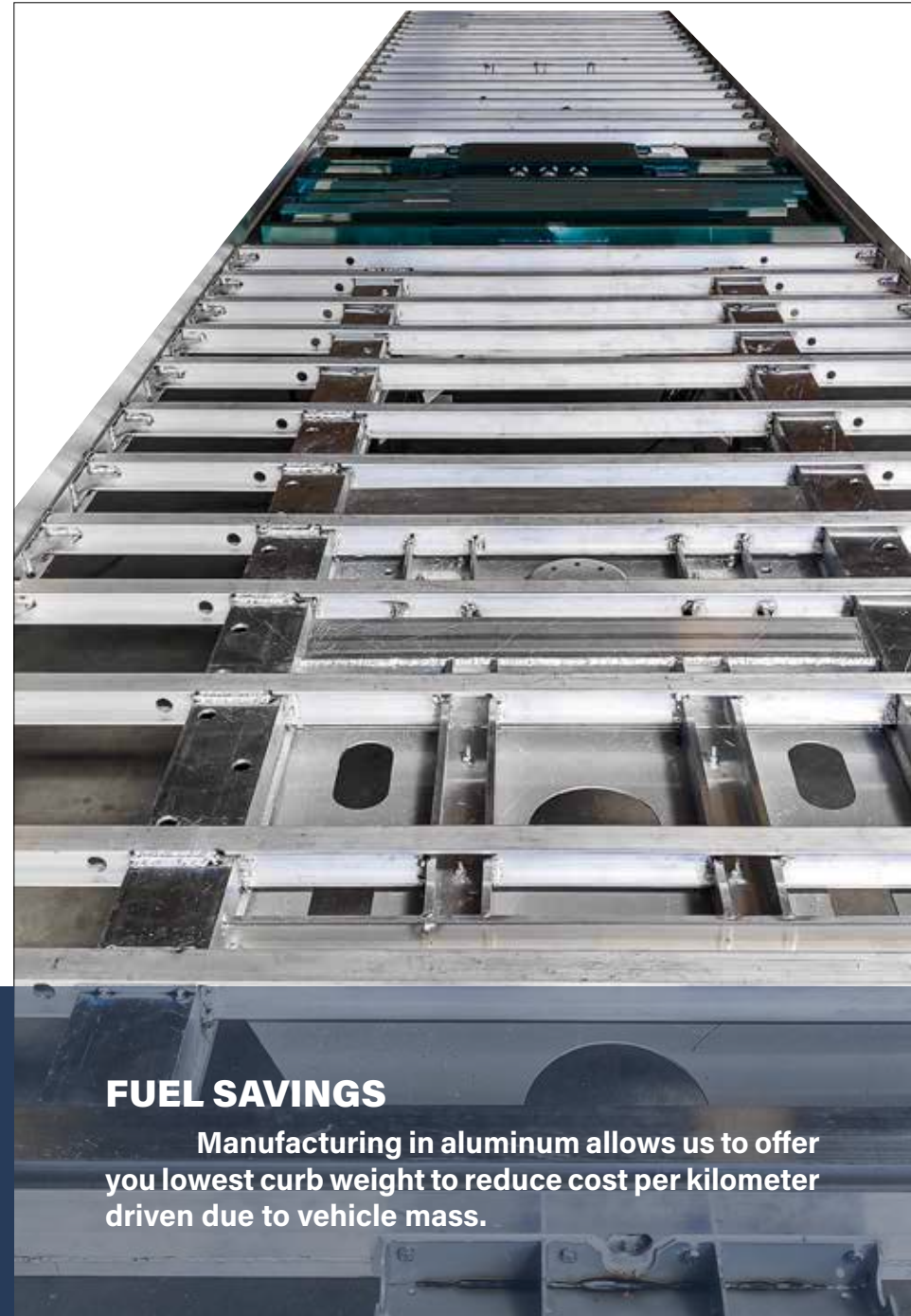
Vehicle design is optimized for difficult access to avoid interference with obstacles in workplaces.

LIGHT



LIGHT ALUMINUM MANUFACTURING

The vehicle is almost entirely manufactured made of aluminum, except for the fixing plate king pin and link Brackets suspension together with its bracing. These elements are screw-mounted double insulated by paint and an adhesive insulating polymer.



FUEL SAVINGS

Manufacturing in aluminum allows us to offer you lowest curb weight to reduce cost per kilometer driven due to vehicle mass.

INCREASE YOUR INCOME

ON EACH TRIP YOU WILL HAVE THE HIGHEST POSSIBLE PAYLOAD



RESISTANT



ALUMINUM EXTRUSION BEAMS

The best aluminum welding is the one that is not done. For this reason, we assemble all the main structural profiles of one-piece direct extrusion aluminum without welding. We can offer you the best possible finish, plus a vehicle with the longest service life.

COLD CUT

The main chassis girders are cut by a process cold cutting by high pressure water (Waterjet). In this way avoid the unwanted heating of other procedures cutting or welding that reduces its resistance by altering the treatment thermal aluminum alloy.





SOLID CONSTRUCTION

The reinforcement cross members in the pivot area of chassis coupling are welded and machined. In this way the resistance of the union does not fall solely in the welding process. With this, greater resistance to fatigue.

ALITE IS A SAFE INVESTMENT

YOUR WALKING FLOOR WITH THE LONGEST USEFUL LIFE



REINFORCED

All walking floor fixing cross members the side panels of the body incorporate welded reinforcement gussets. In this way reinforces the construction of the whole.

RELIABLE


100 % CONTROL OF THE PRODUCT

We manufacture our own walking floor machine. By we can offer you the best guarantee. His design is aimed at reducing maintenance costs and repair. We also guarantee the use of elements standard type tightness and control easily and inexpensive replacement anywhere.



REDUCE EFFORTS

Our innovative and exclusive bracing and fixing system from the axles to the chassis beams is optimized to reduce the maximum stresses and loads transmitted to the chassis. The great height of the chassis section considerably reduces the height of the suspension supports, so that the loads that are transmitted are minimal.



**SO ROBUST
AND RESISTANT
THAT WE CAN
OFFER YOU
THE BEST
GUARANTEE(*)**

4 YEARS WARRANTY ON THE CHASSIS STRUCTURE

+

3 YEARS WARRANTY ON BPW AXLES OFF-ROAD USE

+

2 YEARS WARRANTY ON THE WALKING FLOOR MACHINE



REDUCE YOUR STOPS
WITH ALITE YOU MINIMIZE YOUR OPERATING EXPENSES
WE OFFER YOU THE LESS MAINTENANCE

(*)You can consult our guarantee Policy at www.grupo-alite.eu

ALITE



20th CENTURY

ALITE

000



21st CENTURY

FAMILY HD DRYLOAD

Our design, manufacture, and total control of the manufacture of the vehicle allows us to offer you the greatest possibilities for customization; according to the type of load, use and preferences. Depending on the height of the coupling pin and its load capacity we can distinguish two models of the Dry Load family: KP HIGH and KP LOW.



The vehicles of the Dry Load family have characteristics that make them one of the most robust on the market to guarantee maximum safety on the toughest terrain. It is the ideal vehicle for cargo and unloading of bulk products, standard pallets, or big bags, among others.



You can configure the vehicle with the multiple options available to adapt it to your purpose according to your preferences. Our proposed part of a base vehicle with various selectable options. We are a flexible factory with complete autonomy in the production of all components. You can see the complete information with ALL the possibilities in its technical sheet.

YOU CAN FIND THE TECHNICAL SHEET ON OUR WEBSITE WWW.GRUPO-ALITE.EU

**FOR DRY BULK AND / OR PALLETIZED LOADS
AGRICULTURE, INDUSTRIAL, DRY WASTE SECTOR**

DYRLOAD FAMILY MODELS FOR DRY LOADS



HD DRYLOAD KP-LOW

For dry bulk and / or palletizable cargo for a fifth wheel height on tractor **1,100 to 1,150 mm**. Maximum load on the pivot (KP) of **12 tn**. Possibility of assembling a 21 or 24 planks equipment. Wheels with 385/65 R22.5 tires.



HD DRYLOAD KP-HIGH

For dry cargo in bulk and / or palletizable for a fifth wheel height on tractor **1,200 to 1,250 mm**. Maximum load on the pivot (KP) of **16 tn**. Possibility of assembling equipment with 21 or 24 planks. Wheels with 385/65 R22.5 tires.

**CHOOSE THE MODEL THAT BEST SUITS YOUR
TRACTOR HEAD OR APPLICATION**

FAMILY HD WETLOAD

Thanks to the flexibility of our products and their customization we can offer you two complete products that meet your function in a very efficient way in the field and they will help you do your job with less effort. Depending on the height of the pivot coupling and its load capacity we can distinguish two models of the Wet Load family: KP HIGH and KP LOW.



The Wet Load vehicle is designed to transport goods with low fluid component loading, ensuring minimal spills at a Price tight. The models of the Wet Load family have a tank rear for partial collection of fluids. There is the possibility to configure the vehicle for transporting solid urban waste.



You can configure the vehicle with the multiple options available to adapt it to your purpose according to your preferences. Our proposed part of a base vehicle with various selectable options. We are a flexible factory with complete autonomy in the production of all components. You can see the complete information with ALL the possibilities in its technical sheet.

The models in this family are fitted with walking floor plates with a fluid collection channel and a rear collecting tank. Access to the warehouse it is simple to clean by means of a side cover and incorporates a 2" ball-type key for emptying. You can view the information complete with ALL the possibilities in the technical sheet of each model.

YOU CAN FIND THE TECHNICAL SHEET ON OUR WEBSITE WWW.GRUPO-ALITE.EU

**FOR BULK WET LOADS AND URBAN SOLID WASTE
DEPOSIT FOR PARTIAL COLLECTION OF SPILLS**

WETLOAD FAMILY MODELS FOR WET BULK LOADS



HD WETLOAD KP-LOW

For wet bulk goods with a height of fifth wheel on the **1,200 to 1,250 mm** tractor. Maximum load on the pivot (KP) of **16 tn**. Walking floor equipment with 21 planks with collection channel and **deposit of rear leachate**. Wheels with 385/65 R22.5 tires.



HD WETLOAD KP-HIGH

For wet bulk goods with a height of fifth wheel on the **1,100 to 1,150 mm** tractor unit. Maximum load on the pivot (KP) of **12 tn**. Walking floor equipment with 21 planks with collection channel and **deposit of rear leachate**. Wheels with 385/65 R22.5 tires.

**CHOOSE THE MODEL THAT BEST SUITS YOUR
TRACTOR HEAD OR APPLICATION**

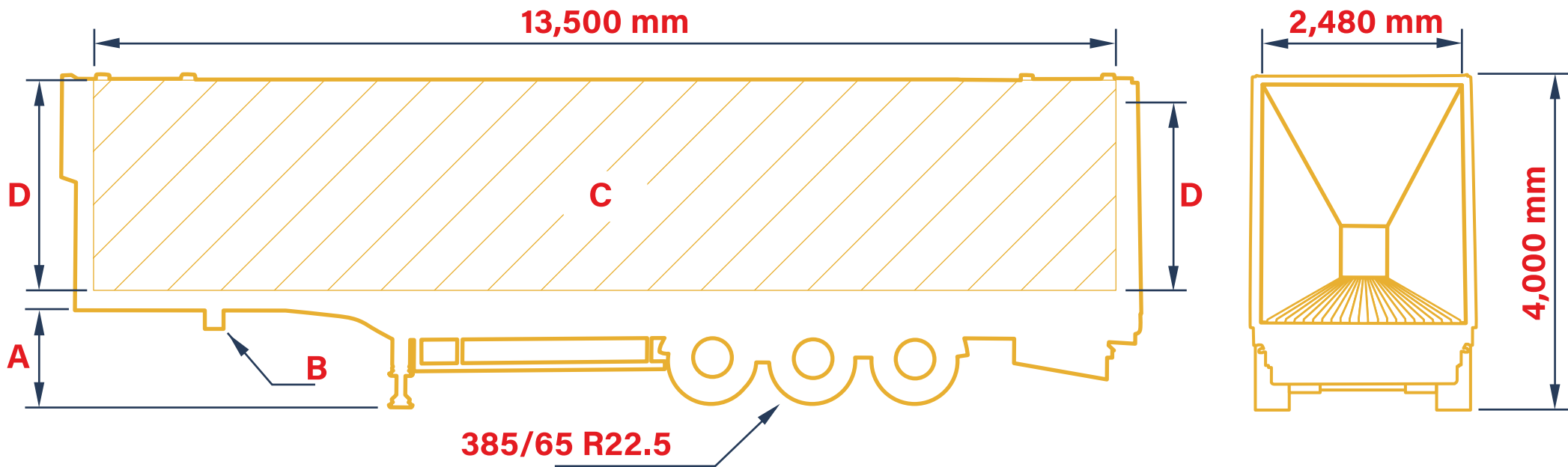
TECHNICAL COMPARISON

Compare the four available models of our Heavy-Duty product in the following table, according to the capacities and characteristics techniques of the vehicles seen above.

	VALUE	A	B	C	D	EMPTY WEIGHT
	MODEL	HEIGHT KP (mm)	TPMM KP * (kg)	USEFUL VOLUME (m³)	USEFUL HEIGHT (mm)	STANDARD VERSION (kg)
1	HD-DRYLOAD KP-LOW	1,120 (1,100-1,150)	12,000	91.4	2,730	7,650
2	HD-DRYLOAD KP-HIGH	1,200 (1,200-1,250)	16,000	88.7	2,650	7,780
3	HD-WETLOAD KP-LOW	1,120 (1,100-1,150)	12,000	91.4	2,730	7,870
4	HD-WETLOAD KP-HIGH	1,200 (1,200-1,250)	16,000	88.7	2,650	8,090

IF YOU NEED MORE INFORMATION,
ASK US FOR THE TECHNICAL
DATA VEHICLE THAT YOU WANT
AND YOU WE WILL SHIP WITHOUT
COMMITMENT. YOU CAN ALSO
DOWNLOAD IT EASY AND QUICKLY
ON OUR WEBSITE:

WWW.GRUPO-ALITE.EU



* TPMM = Technically Permissible Maximum Mass.

COMPARISON BY USE

Each vehicle is adapted to specific needs. Below we show you a summary table so that you can compare each model from the Heavy-Duty range according to the type of cargo you want to transport.

LOAD	HD-DRY-KP-LOW	HD-DRY-KP-HIGH	HD-WET-KP-LOW	HD-WET-KP-HIGH
DRY BULK	YES (21 ó 24 Planks)	YES (21 ó 24 Planks)	YES (Only 21 Planks)	YES (Only 21 Planks)
BULK WET	NO	NO	YES (Only 21 Planks)	YES (Only 21 Planks)
PALLETIZED	YES (24 Planks)	YES (24 Planks)	NOT RECOMMENDABLE *	NOT RECOMMENDABLE *
SACKS OR BIG BAGS	YES (24 Planks)	YES (24 Planks)	NOT RECOMMENDABLE *	NOT RECOMMENDABLE *



*** NOTE:**

For the right functioning, it is necessary to use some contact surface between planks and pallets or big bags, such as a tarp or similar.



112 mm PLANKS FOR
DRYLOAD 21 PLANKS KIT



97 mm PLANKS FOR
24 DRYLOAD PLANKS



112 mm PLANKS FOR
WETLOAD 21 PLANKS EQUIPMENT

THE BEST STANDARD EQUIPMENT

1 ROLLER ROOF HANDBOOK

Roll-up canvas roof 680 g / m² manual type with 600 mm drop to the side left in running order and fixed with ratchets on the side law.

Hydraulic valve of own manufacture to avoid problems caused by wrong connection when exchanging the pressure hose by the return hose. I know prevent breakdowns in walking floor equipment.

3 SECURITY VALVE



2 SWEEPING CANVAS

Tarpaulin canvas mounted on a bar with sliding carriages. The caroches are of stainless steel and Montana standard type bearings easily removable for maintenance simple.



Panel for monitoring the system parameters and messages vehicle brakes. Enter the function scale for the tridem.

4 INFORMATION DISPLAY



5

BAYONETS

We manufacture our aluminum bayonets. Its assembly is screwed, and they can be lowered manually. Have of an automatic turn spring return with spring. Bearing Arnite axial and bearing Maintenance free TX for the spin.



TOWING RINGS

6

Two towing eyes on the rear bolted to the chassis beams.



7

WALKING FLOOR CONTROL PANEL

To control the walking floor, it includes:

- Control panel with panel and keypad
- Radio control
- Control via cable



SPARE WHEEL SUPPORT

8

Wheel bracket spindle type replacement bolted to the chassis.



6

THE BEST STANDARD EQUIPMENT

9 PNEUMATIC LOCK

Additional pneumatic safety closing system for the rear doors with manual operation with a button on the chassis.



10

AUXILIARY LADDER

12-step aluminum ladder with support on the cyclist lifter.

11

PLANK WEDGES



Cast aluminum welded wedges.

12 ACCESS LADDER

Three-step retractable ladder located at the rear to facilitate access to the interior.

13

PILOT PROTECTION

Aluminum manual flip covers integrated into the rear of the vehicle to protect the drivers.

Grupo **ALTE** www.grupo-alite.net
TLF: 967 138 176 VILLARROBLEDO, ALBACETE, ESPAÑA

ARCHES

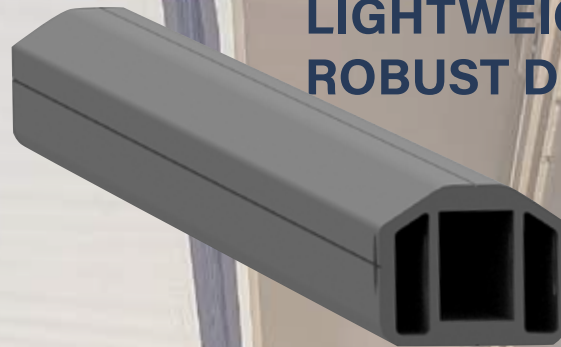
ARCHES

14

ALITE system with 5 arches in 60x50 mm black anodized aluminum extrusion tube.

Flip-up mounting and side swivel for unobstructed access.

LIGHTWEIGHT AND ROBUST DESIGN



SIDE SWIVEL



FOLDING UP



OUR PASSION FOR THE SMALL DETAILS



**MINIMEX PRESSURE
TAPES INTEGRATED IN THE
FRONT SAFETY VALVE TO
CHECK THE OPERATION
OF THE SYSTEM**



**HYDRAULIC TUBES
INTEGRATED ON THE
OUTSIDE OF THE
CROSSBODIES. ACCESS
AND ITS MAINTENANCE IS
EASILY BEING PROTECTED.**



**WALKING FLOOR
MACHINE WITH
INTEGRATED FRAME
TO PREVENT HEAD
LOSS CAUSED BY
DEFORMATION IN THE
CENTRAL AREA OF
THE BODYWORK.**



**INTEGRAL TYPE FENDERS
WITH BUILT-IN SKIRTS
AND HIDDEN FIXING
TUBES.**



REAR DOOR FAILURES WITH FOLDING HANDLE MADE OF STAINLESS STEEL. CLOSING HINGES WITH 15 mm SOLID SHAFT IN STAINLESS STEEL.



MANUAL EMERGENCY OPERATIONS FOR ALL HYDRAULIC CONTROLS: ROOF, REAR DOOR AND WALKING FLOOR.

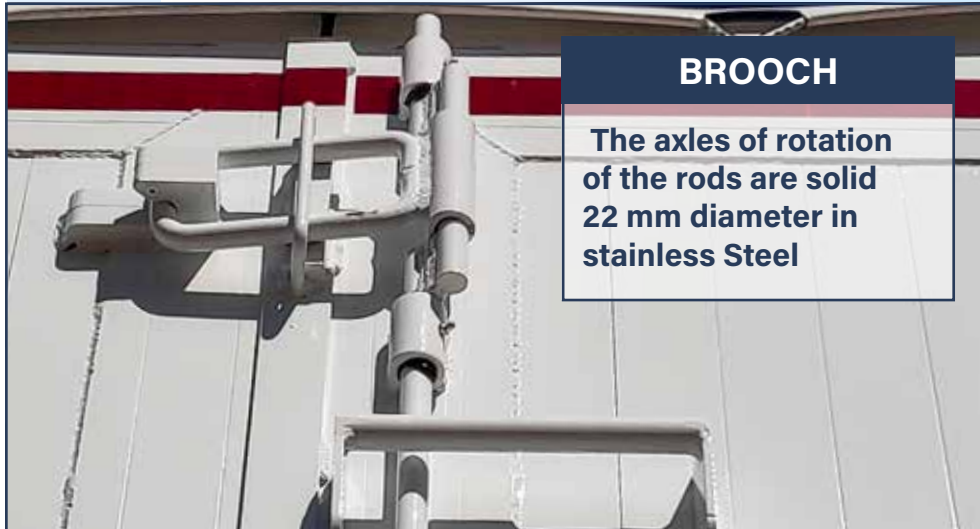


REMOVABLE BEARING WHEELS IN THE CARRIAGES OF THE TROLLEYS FOR FRONT SWEEPERS. ECONOMIC AND SIMPLE SUBSTITUTION.



FINISHED IN WATER-BASED ACRYLIC PAINT. MORE RESPECTFUL SYSTEM WITH THE ENVIRONMENT.

REAR DOORS



BROOCH

The axles of rotation of the rods are solid 22 mm diameter in stainless Steel



HANDLES

Lower part with folding crank. Integral stainless-steel construction.



HIGH PERFORMANCE DETAIL

Our rear doors are so robust that they do not need a closure on the upper cross member. Top snap closure prevents need for additional hardware and the use of a double espagnolette. Mounting the top cross member on the doors is optional and is only used to secure the tarp to the ceiling.

ADAPTABILITY

We think down to the smallest detail to guarantee you the greatest satisfaction. For this reason, our designs are in constant innovation to offer you the solution that best suits your needs. We have a wide range of options so you can customize your vehicle.

OPTIONS

ROTATING REAR ALUMINUM CROSSBAR

The left wing of the door incorporates a spring lock for simultaneous opening of the upper cross member with the door wing



ALUMINUM REINFORCED FIXED REAR MELT



HYDRAULIC ROOF TYPE BUTTERFLY WING ALITE OF OWN MANUFACTURE



DRIVES

Simple and robust in-house hydraulic system. Its assembly is modular, bolted and mounts standard double-acting cylinders and a chain.



CEILINGS AND ARCHES



ARQUILLAS WITH SPRING CLOSURE



REINFORCED ARQUELS



ELECTRIC AUTOMATIC SLIDING ROOF



FRONT ACCESS DOOR



**HERMETIC REAR DOOR WITH HYDRAULIC OPERATION
AND SYNCHRONIZED LATCHES**

UPPER SIDE FOLDING DOORS



DOORS

COMPLETE INTERIOR REINFORCEMENT



REINFORCEMENT



PARTIAL INTERIOR REINFORCEMENT

**REINFORCED PLANKS 6, 8 OR 10 mm
THICKNESS**



**STAINLESS STEEL REAR
SLIDE PLATE.**



RECESSED RINGS



ADAPTABLE BOX HEIGHT: FROM 1,400 TO 3,000 mm
ADAPTABLE BOX LENGTH: FROM 10,000 TO 13,650 mm



REAR DRAWER BETWEEN CHASSIS

EXTENSIBLE STEEL ANTI-STOP



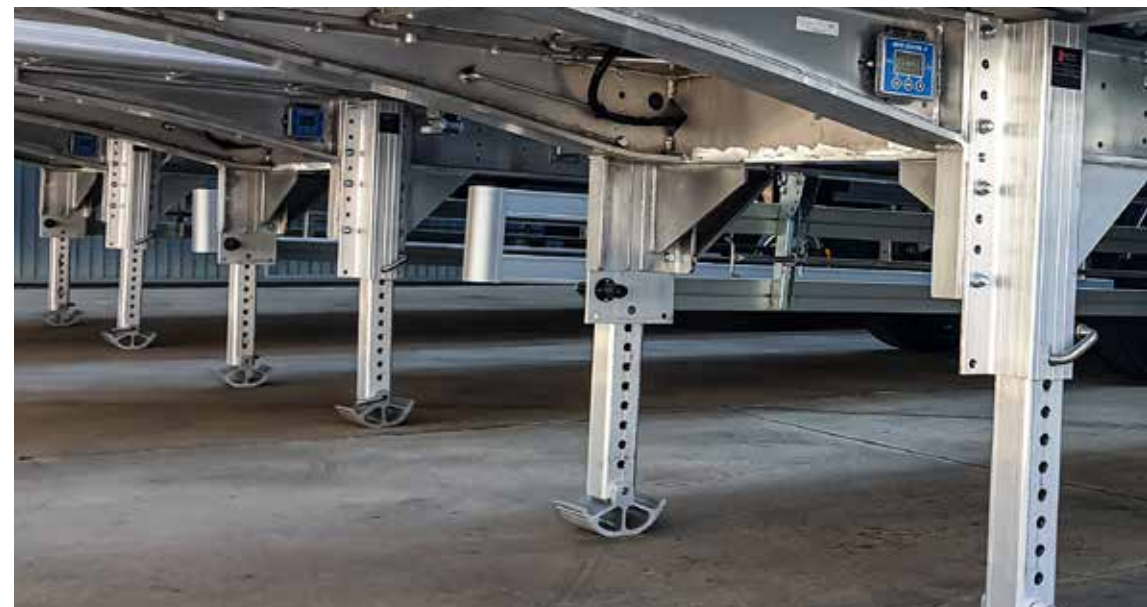
RECORD FOR GRAIN IN STAINLESS STEEL



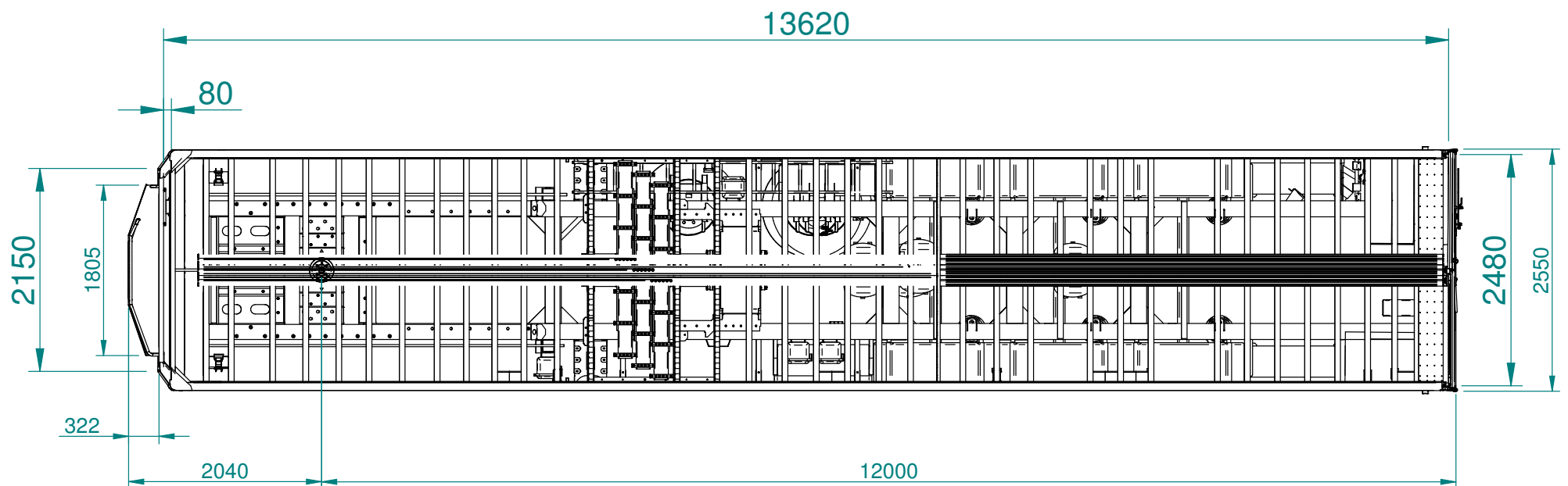
COACHWORK AND OTHERS



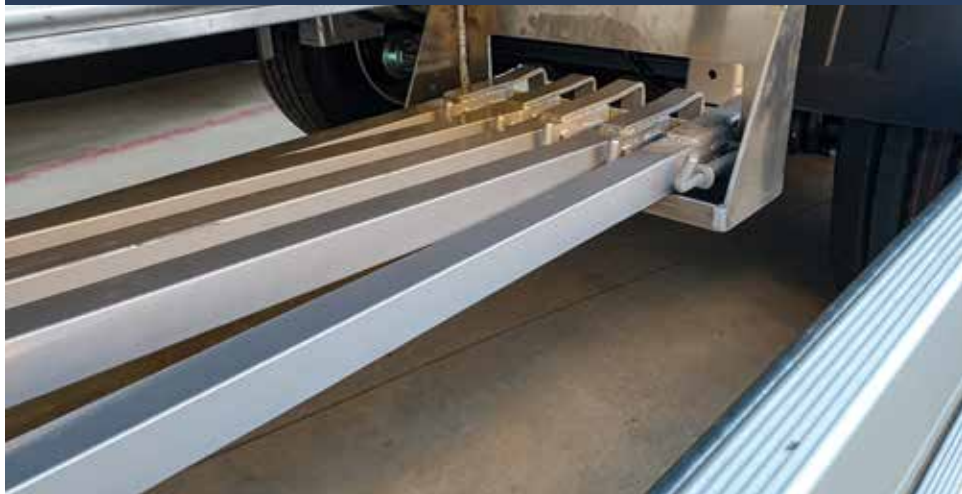
CHANGE USEFUL INTERIOR LENGTH 13,500 TO 13,620 mm WITH INTERNAL CHAMFER



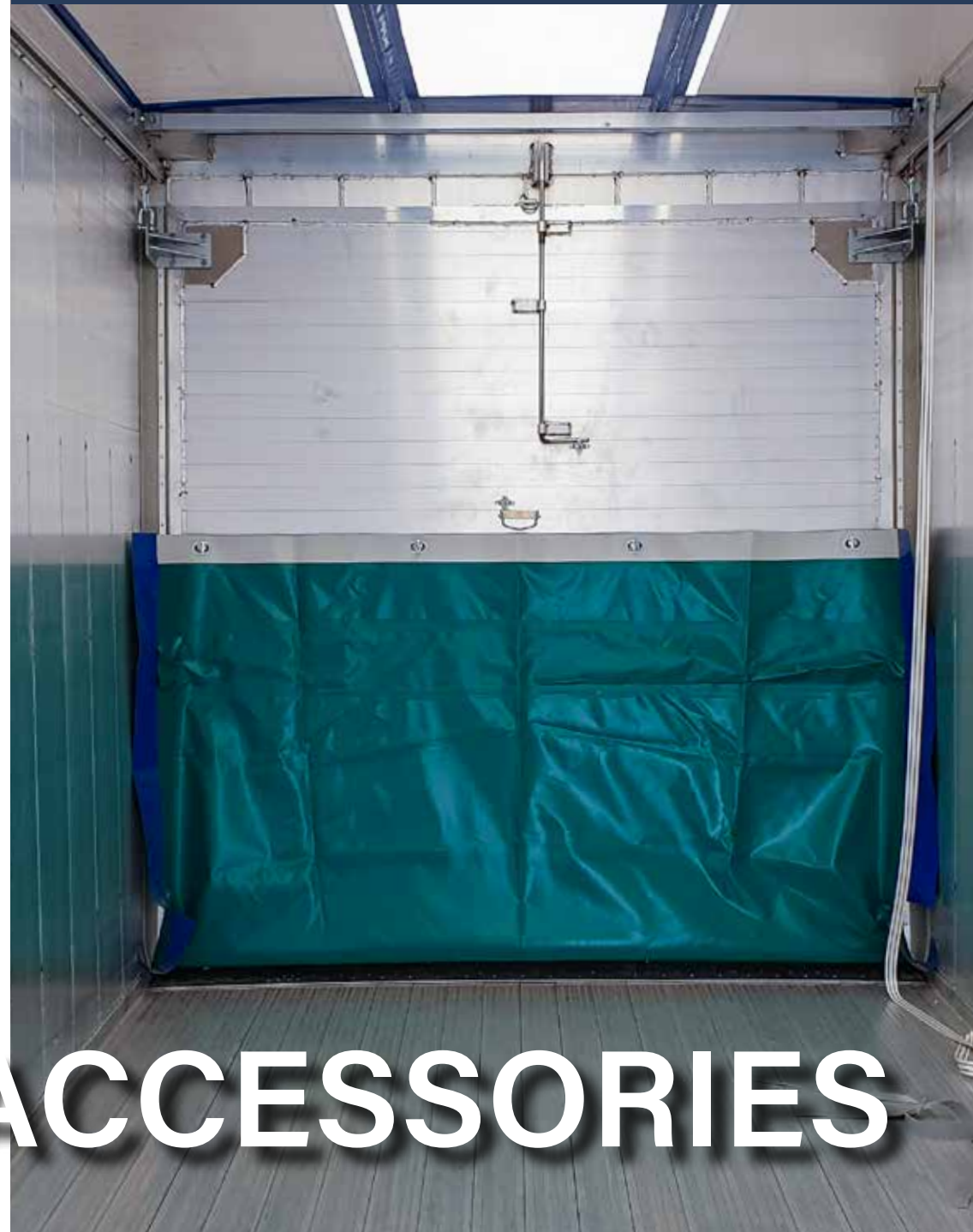
ALUMINUM LEGS WITH MANUAL EXTENSION



SUPPORT FOR ARQUILLAS



INSIDE ALUMINUM WALL



WASHING SYSTEM



ACCESSORIES



ADD ALITE PNEUMATIC ROLLER FOR FRONT SWEEPER



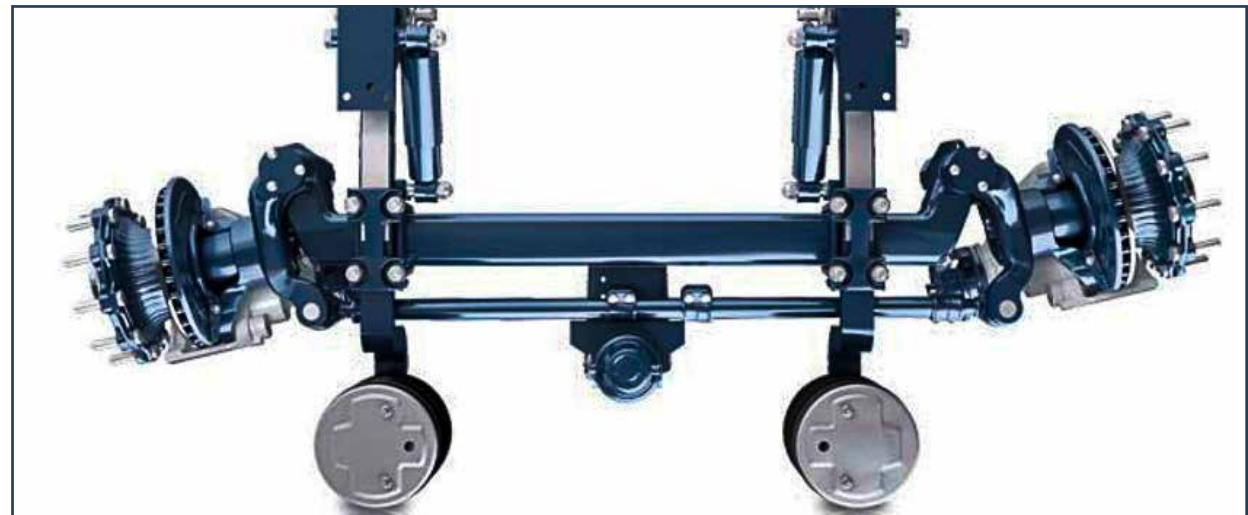
CUSTOMIZED REAR OPTICAL GROUPS



**FINISHED IN ANY RAL
CHARTER COLOR**



**ADD 4 RINGS TO THE CHASIS FOR THE
MOORING OF THE VEHICLE ON BOARD**



SELF-STEERING 3RD AXLE ASSEMBLY BPW WITH BANK

AUTONOMOUS DIESEL ENGINE FOR WALKING FLOOR



REAR DRAWER FOR ACCESSORIES



BPW AIRSAVE SELF-PUMPING SYSTEM





AHD
HEAVY DUTY

MORE INFORMATION IN:
www.grupo-alite.eu/en



FACTORY:

PG IND. CL De la Cierva 16-20
02600 Villarrobledo, Albacete
SPAIN

Phone: +34 967 13 81 76
ofertas@grupo-alite.eu

www.grupo-alite.net
VILLARROBLEDO, ALBACETE, ESPAÑA