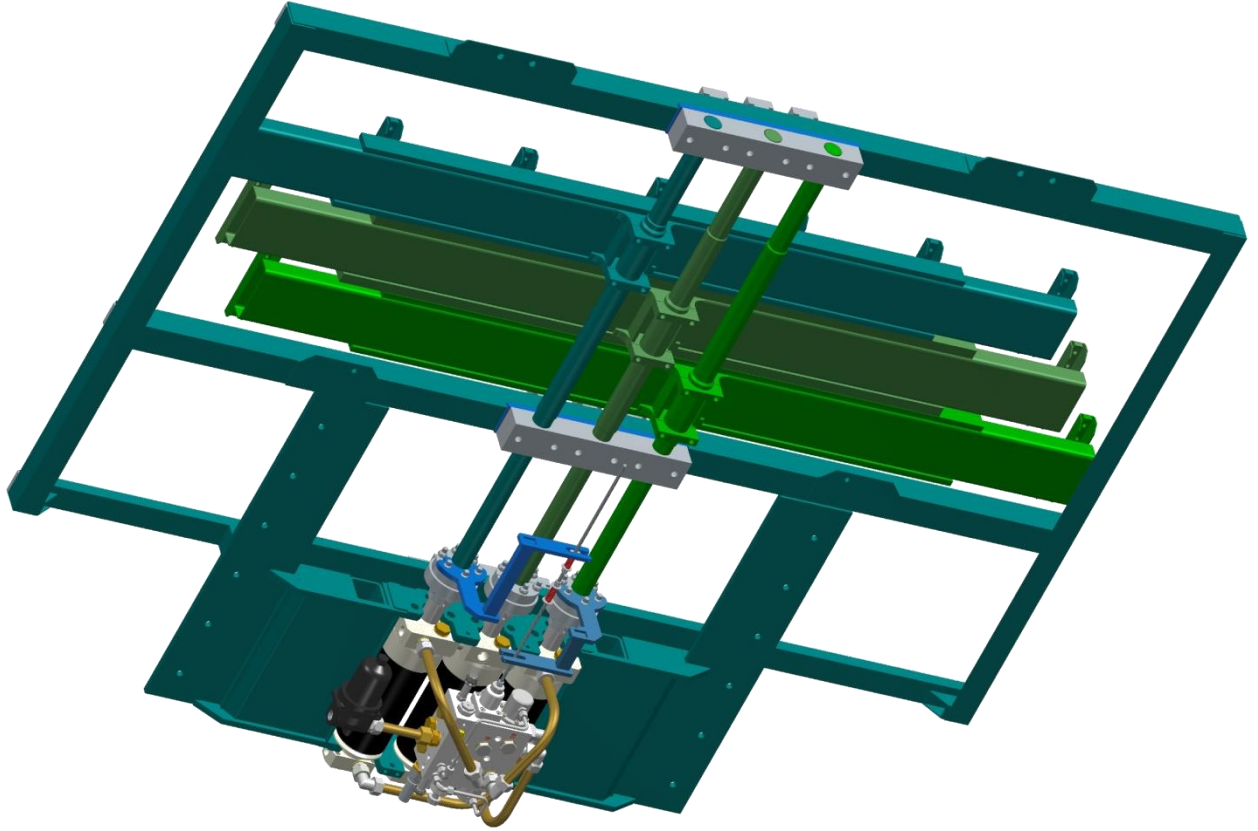




www-grupo-alite.eu

WALKING FLOOR MACHINE ALITE GROUP HEAVY DUTY STANDARD FOR 18, 21 OR 24 SHEETS



FACTORY

PG. CL De la Cierva, 16, 18 y 20
02600 VILLARROBLEDO, ALBACETE
ESPAÑA, Tif. +34 967 14 14 34

ADMINISTRATION AND POST-SALE

PG. CL De la Cierva 14
02600 VILLARROBLEDO, ALBACETE
ESPAÑA, Tif. +34 967 13 81 76



Queries: (+34) 967 141 434



(English / French)



alite@grupo-alite.net

SYSTEM DESCRIPTION

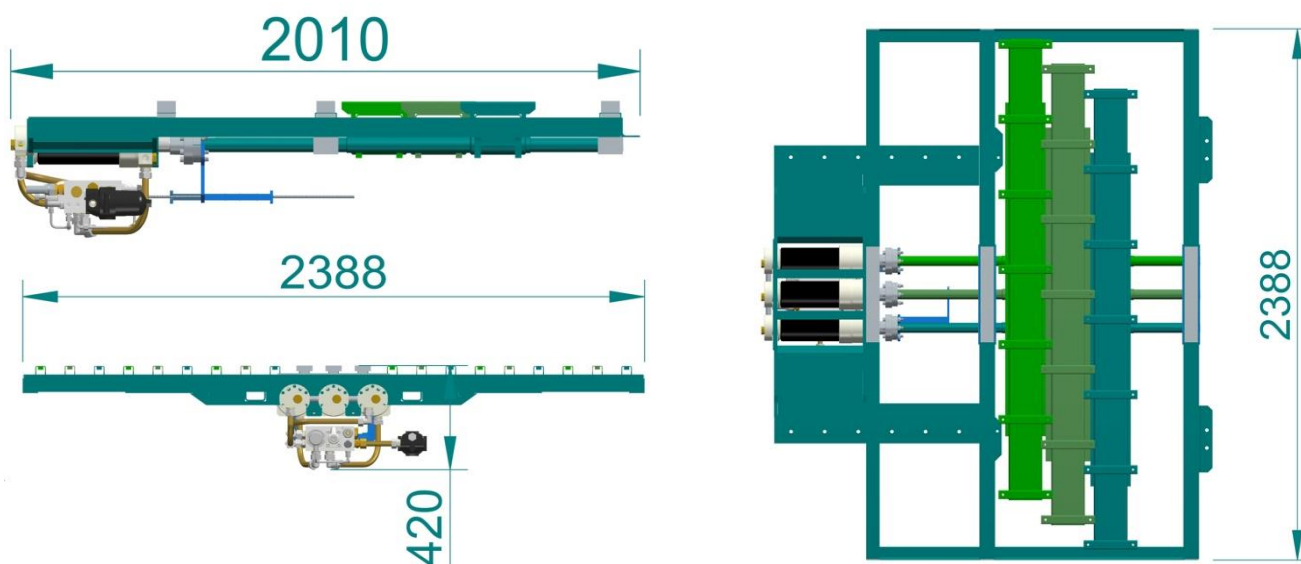


The ALITE GROUP Heavy-Duty walking floor model is a hydraulic solution for the horizontal loading and unloading of vehicles and/or static installations of large tonnage for fractional or palletized loads. This model is in accordance with the Machinery Regulation (CE) and other current regulations. They incorporate all the technical advances from their design to their manufacture and commissioning.

Standard equipment:

- Equipment integrated in a modular frame for easy assembly
- 3 double-acting cylinders with a reinforced diameter of 105 mm.
- Modular type F125 chrome plated steel shanks removable in 2 independent sections.
- Rod sliding guides for plated shanks machined in Delrin with bronze guide tapes.
- 3 bars of guide blocks in machined polyethylene.
- Fixed console type electric control panel, cable control and 4-channel radio control.

OVERALL DIMENSIONS:



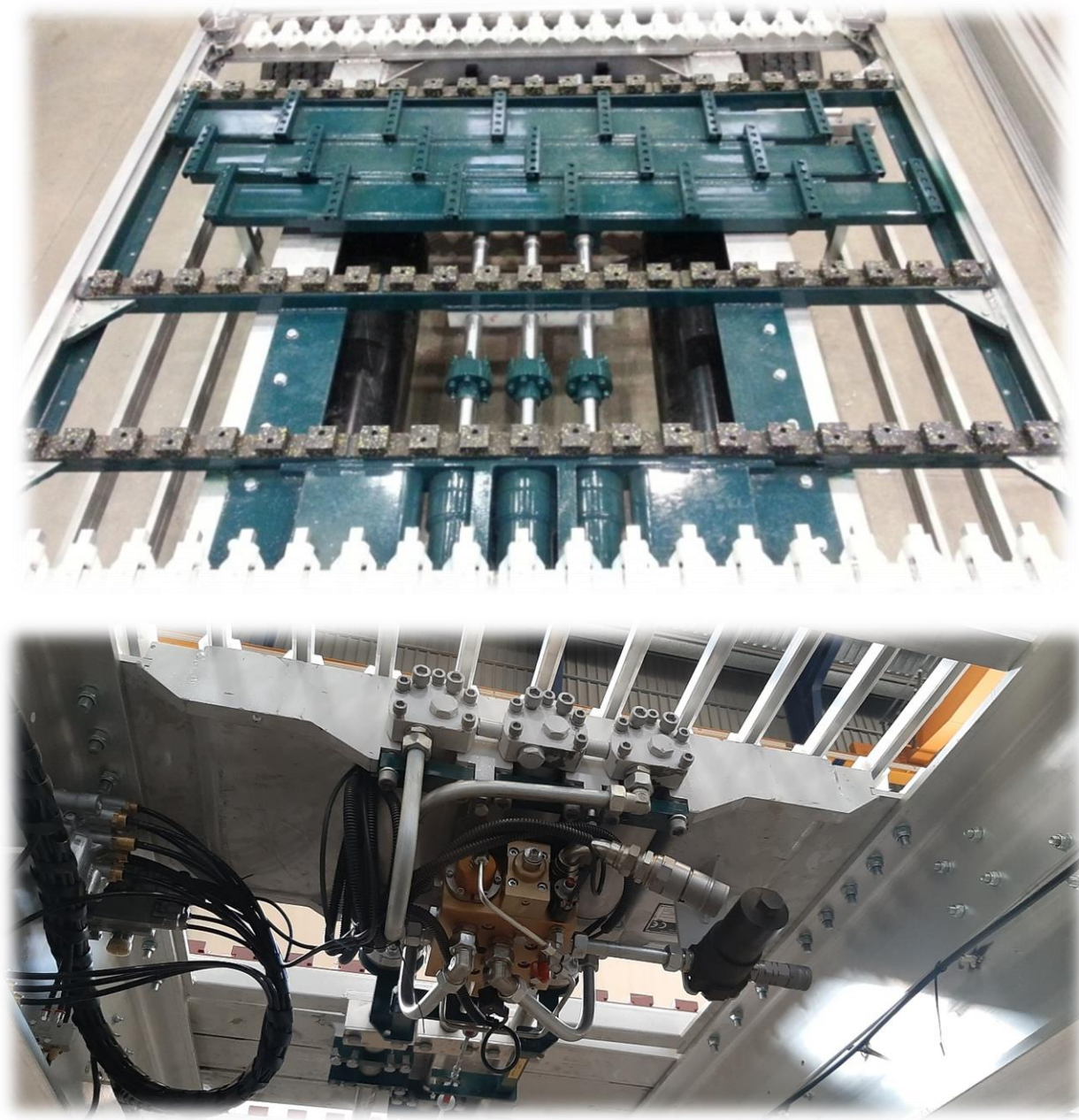
PERFORMANCES:

➤ Max. Workpressure (bar):	240
➤ Min.-Max. Flow (l/min):	40 – 110
➤ Max. Load-unload:	30 Tn
➤ Standar drive:	Electric
➤ Emergency drive:	By hand
➤ Weight (Kg):	485
➤ Total cycle time (100 l /min):	12 cycle/min
➤ Máx Power (100 l/min):	35,5 kW

INSTALLATION

- The equipment will be fixed in a screwed way, using the fixing plates included in the equipment frame, on the mounting frame. The minimum mounting width will be 1,100 mm and the maximum 1,400 mm. The integrated frame also allows the fixing and reinforcement of the side panels of the enclosure in a screwed way.

MOUNTING ON ALITE SEMI-TRAILER

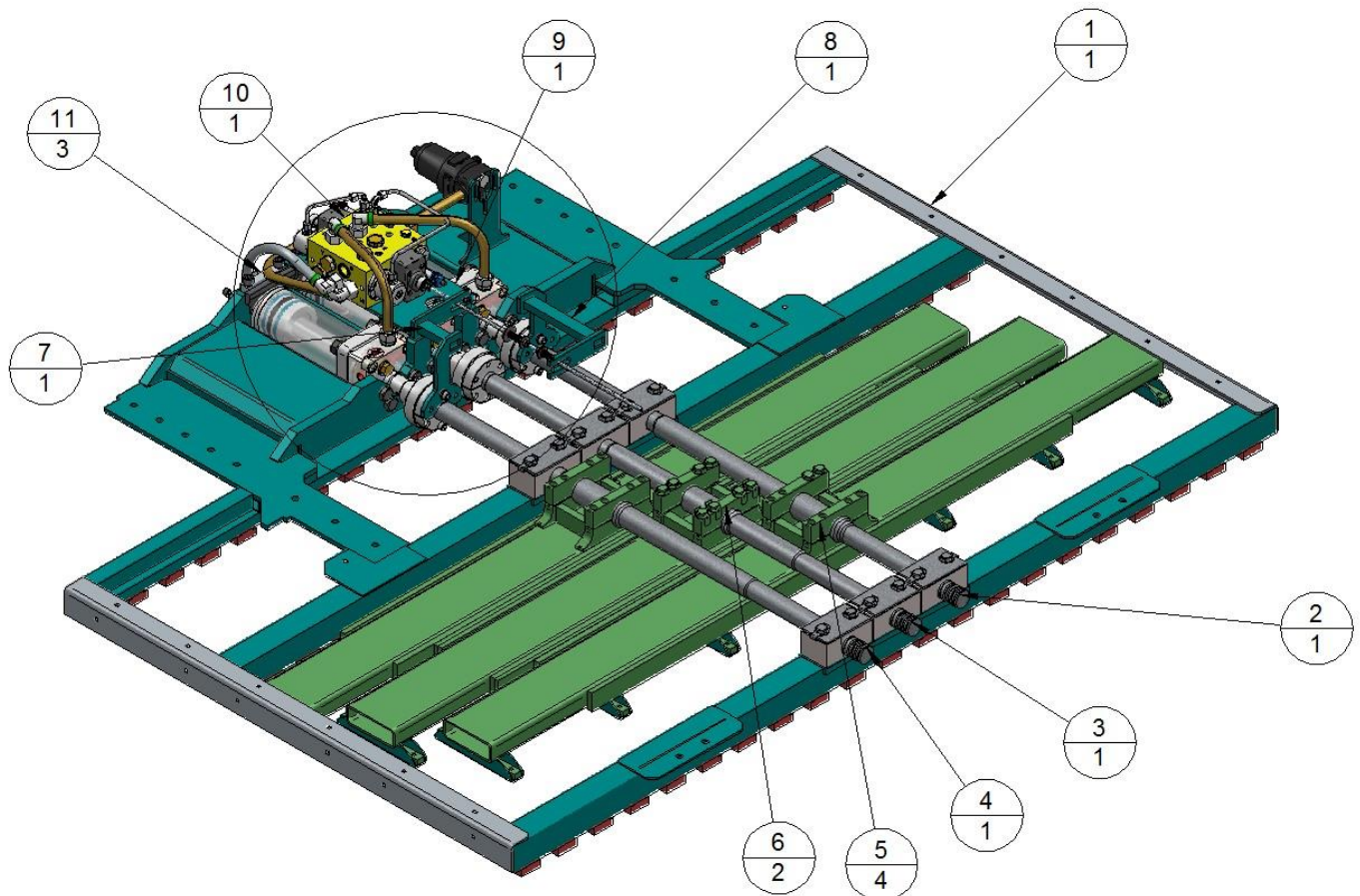


• SECURITY PARTS

Integrated security parts as standard:

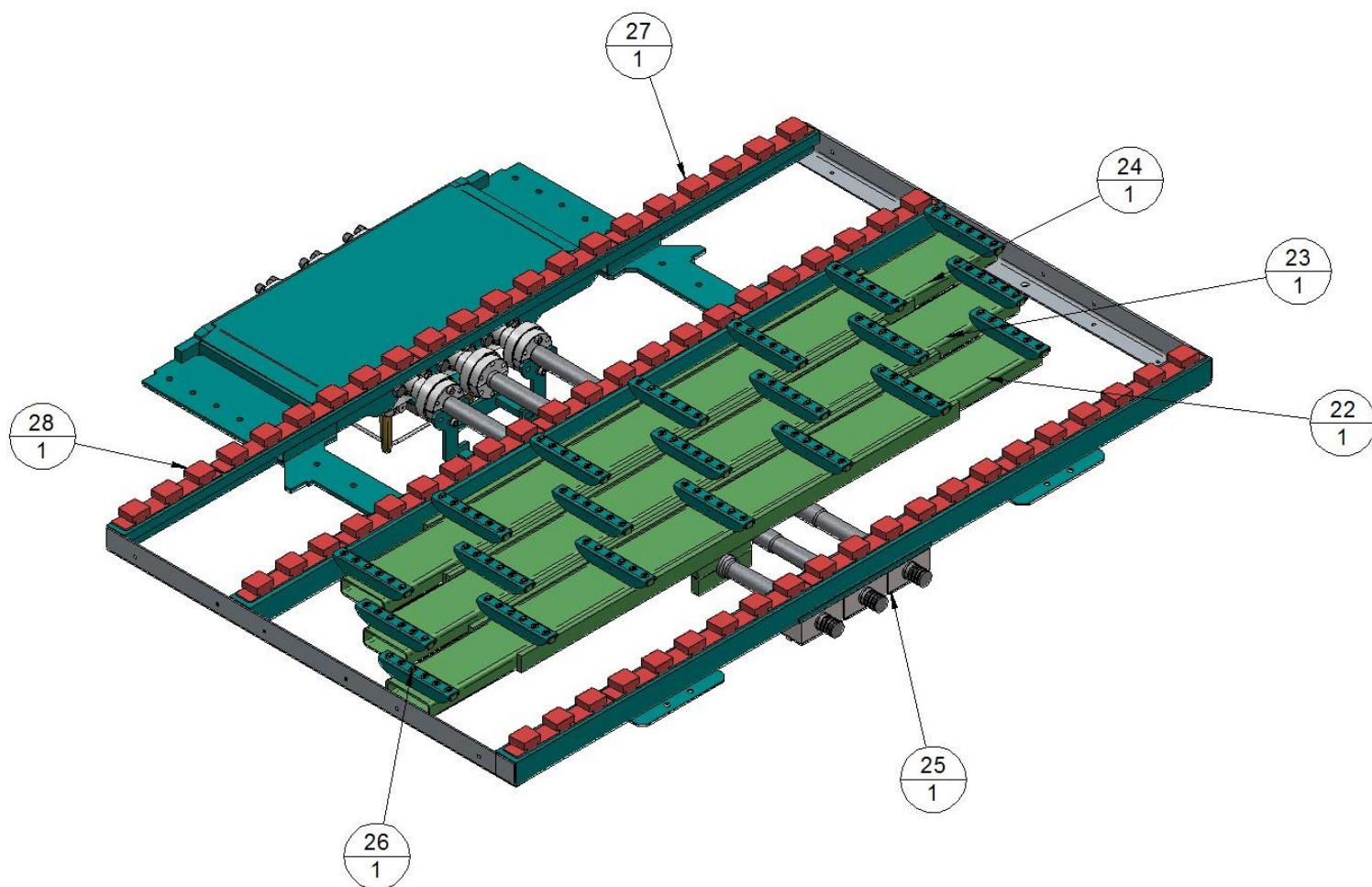
- Overpressure valve rated at 220 bar.
- Emergency stop.
- Shielded and sealed pushbuttons IP67.
- Electric fuse box protection.
- Emergency manual override.
- Adhesives and rating plates.
- Onswitch with 3 positions.

047-005-500 SISTEMA DE PISO MÓVIL ALITE HEAVY DUTY + PATINES (736 Uds.) + KIT MONTAJE



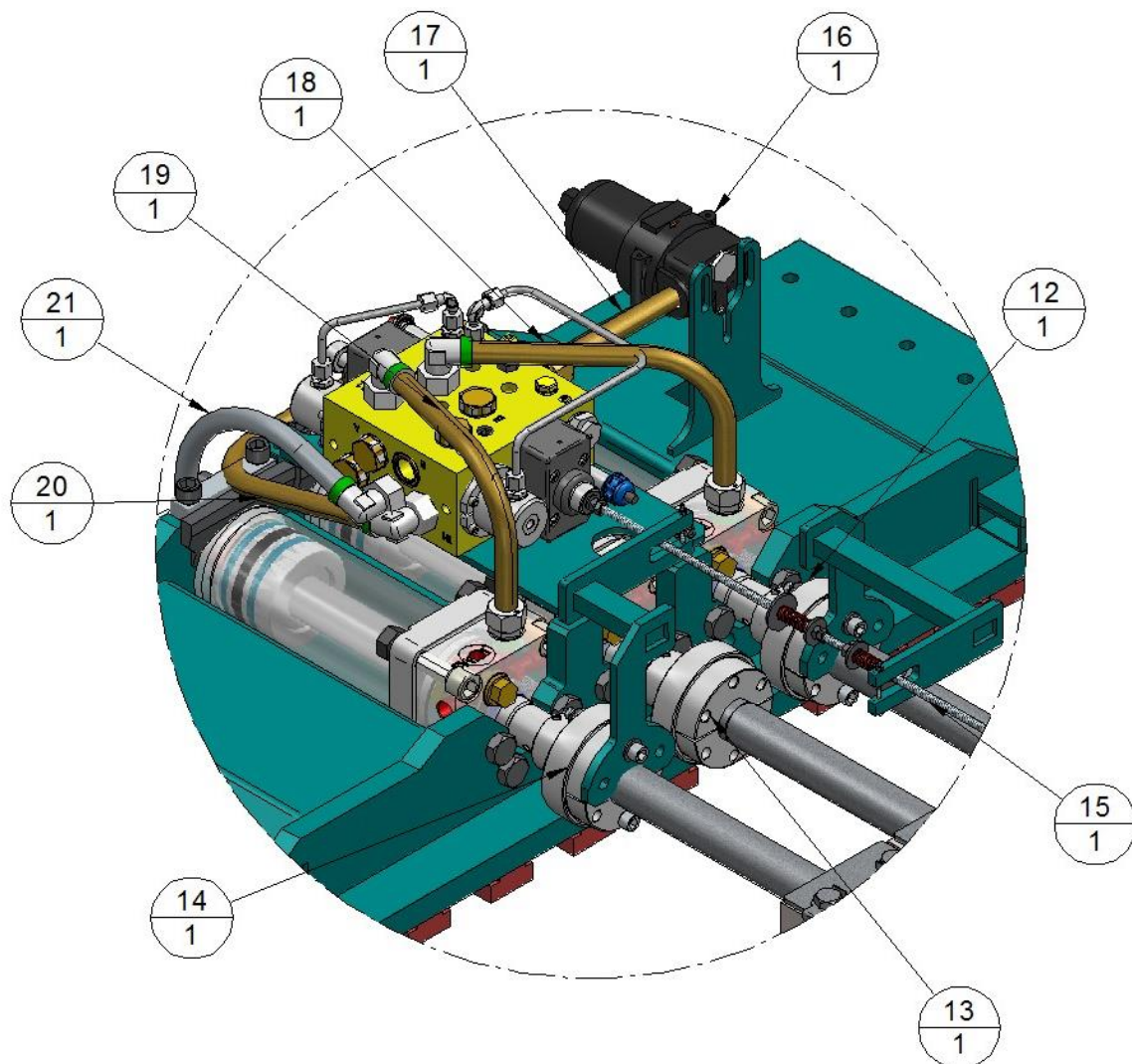
Nº	CÓDIGO	NOMBRE	Cantidad
1	047-005-3-003	CONJUNTO ESTRUCTURA PISO MÓVIL ALITE ESTÁNDAR REV.2	1
2	047-005-214	PISO MÓVIL ALITE VÁSTAGO 01 + CON MEDIAS BRIDAS (F127+CR)	1
3	047-005-215	PISO MÓVIL ALITE VÁSTAGO 02 + CON MEDIAS BRIDAS (F127+CR)	1
4	047-005-216	PISO MÓVIL ALITE VÁSTAGO 03 + CON MEDIAS BRIDAS (F127+CR)	1
5	041-004-046	BRIDA MÓVIL DOBLE TORNILLO AJUSTE PLANO PM	4
6	041-004-032	BRIDA MÓVIL DOBLE TORNILLO PATÍN PM ESTÁNDAR	2
7	047-005-2-021	CONJUNTO TOPE CAMBIO CILINDRO 3 PM ALITE	1
8	047-005-2-020	CONJUNTO TOPE CAMBIO CILINDRO 1 PM ALITE	1
9	041-004-030	CHAPA SOPORTE DISTRIBUIDOR	1
10	047-005-200	DISTRIBUIDOR PISO MÓVIL ALITE ELÉCTRICO S/ELEC S/SOBREP	1
11	047-005-2-023	CUÑA AJUSTE CILINDRO PM ALITE	3

PARTS AND ELEMENTS II



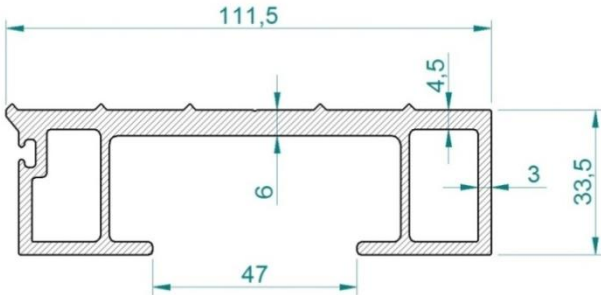
Nº	CÓDIGO	NOMBRE	Cantidad
22	047-005-2-013	PATIN 01 PISO MOVIL ESTANDAR REV.1	1
23	047-005-2-014	PATIN 02 PISO MOVIL ESTANDAR REV.1	1
24	047-005-2-015	PATIN 03 PISO MOVIL ESTANDAR REV.1	1
25	047-005-2-050	PISO MÓVIL ALITE BLOQUE GUÍA DELRIN MACIZO D45 + CINTA GUÍA BRONCE	6
26	047-005-2-025	CONJUNTO TIRANTE DE PISO MÓVIL	21
27	047-005-210	PATÍN COMPACTO PISO MÓVIL ALITE 6U PEINE 112,3 mm	9
28	047-005-211	PATÍN COMPACTO PISO MÓVIL ALITE 3U PEINE 112,3 mm	3

PARTS AND ELEMENTS III

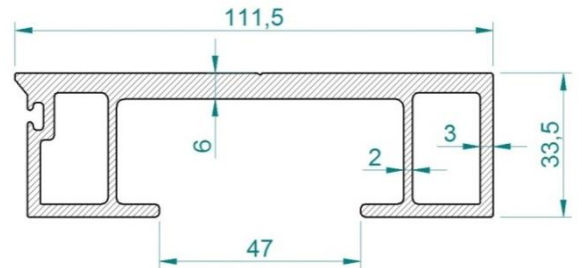


Nº	CÓDIGO	NOMBRE	Cantidad
12	047-005-1-200	PISO MÓVIL ALITE CILINDRO 01 REF. 45-105-180 S.BANC. V.2016	1
13	047-005-1-201	PISO MÓVIL ALITE CILINDRO 02 REF. 45-105-180 S.BANC. V.2016	1
14	047-005-1-202	PISO MÓVIL ALITE CILINDRO 03 REF. 45-105-180 S.BANC. V.2016	1
15	047-005-2-019	CONJUNTO VARILLA Y MUELLES PM ALITE	1
16	002-011-076	FILTRO FILTREC MEDIA PRESIÓN (280 bar) F280D1200B4DSO	1
17	047-005-1-028	PISO MÓVIL ALITE TUBO D22 ENTRADA PRESIÓN DISTRIBUIDOR	1
18	047-005-1-029	PISO MÓVIL ALITE TUBO D22 SALIDA - A - DISTRIBUIDOR	1
19	047-005-1-030	PISO MÓVIL ALITE TUBO D22 SALIDA - A1 - DISTRIBUIDOR	1
20	047-005-1-031	PISO MÓVIL ALITE TUBO D22 SALIDA - B - DISTRIBUIDOR	1
21	047-005-1-032	PISO MÓVIL ALITE TUBO D22 SALIDA - B1 - DISTRIBUIDOR	1

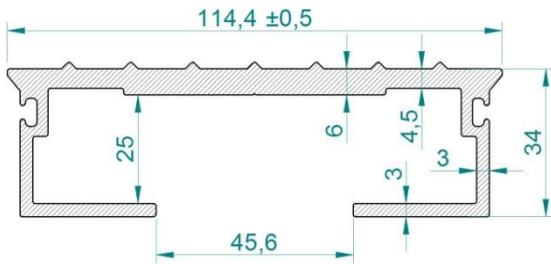
**030-002-076 18505 LÁMINA PISO MÓVIL 21
STD ALITE-CARGO 21 AL6082 T6 (2,911**



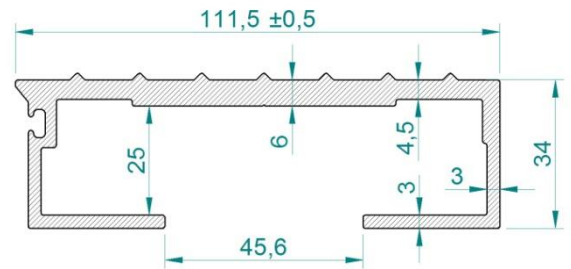
**031-002-074 LÁMINA PISO MÓVIL 21 LISA
STD ALITE-CARGO 21 L6082 T6 (2,884 Kg/m)**



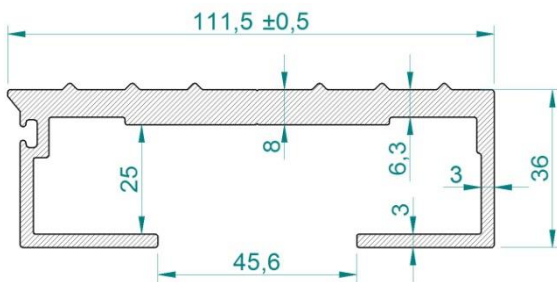
**031-008-026 4018 LÁMINA PISO MÓVIL 21 STD
CARGO e=6 mm DOBLE LAB. AL6082 T6 (2,714 Kg/m)**



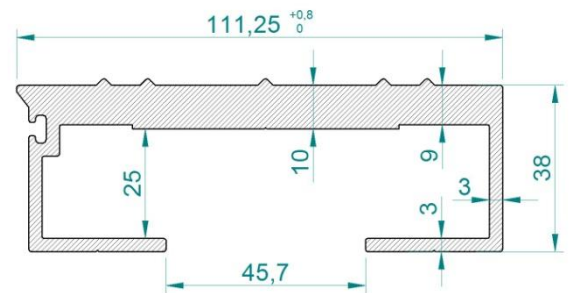
**031-008-004 4014 LÁMINA PISO MÓVIL 21 STD
CARGO e=6 mm AL6082 T6 (2,668 Kg/m)**



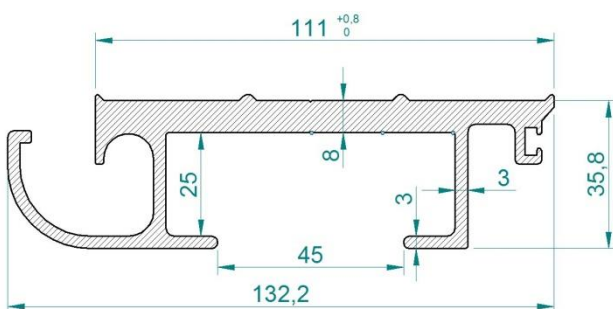
**031-008-028 4589 LÁMINA PISO MÓVIL 21 STD
CARGO 8 mm AL6082 T6 (3,226 Kg/m)**



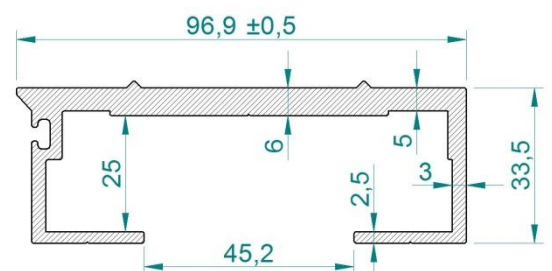
**031-008-018 4343 LÁMINA PISO MÓVIL 21 STD
CARGO 10 mm AL6082 T6 (3,818 Kg/m)**



**031-008-012 4132 LÁMINA PISO MÓVIL 21
SEMIESTANCA AL6082 T6 (3,564 Kg/m)**

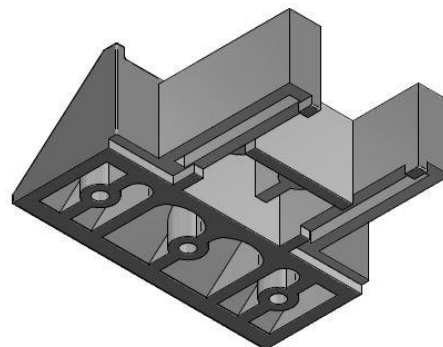


**031-008-019 4385 LÁMINA PISO MÓVIL 24 L
AL6082 T6 (2,287 Kg/m)**



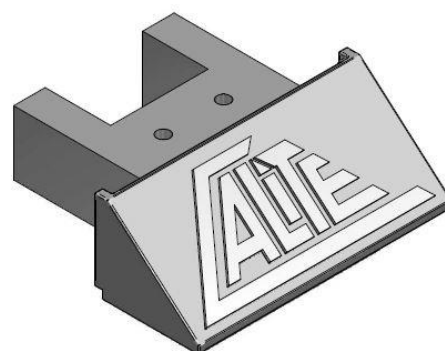
047-005-026 CUÑA LÁMINA PISO MÓVIL 21 L
ALUMINIO SOLDABLE (0,262 Kg)

047-005-036 CUÑA LÁMINA PISO MÓVIL 24 L
ALUMINIO SOLDABLE (0,242 Kg)

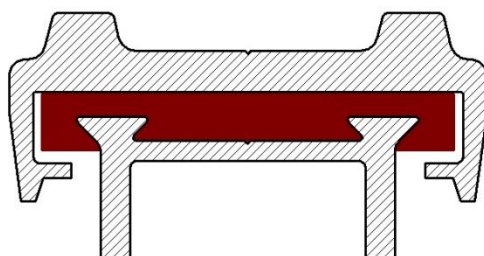


047-005-206 DESLIZADOR INYECTADO TIPO A PISO
MÓVIL ESTÁNDAR

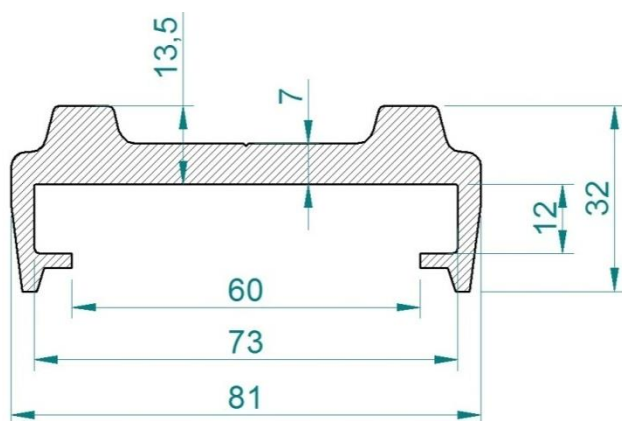
043-005-006 DESLIZADOR PISO MÓVIL ESTANCO
ALITE POLIETILENO 70X10X1000 mm



MONTAJE SISTEMA PISO ESTANCO ...
IMPACTO 18 LÁMINAS



031-002-065 17479 LÁMINA PISO MÓVIL ALITE
ESTANCO IMPACTO AL6082 T6 (2,628 Kg/m)



031-002-067 17177 BASE PISO MÓVIL ALITE
ESTANCO IMPACTO AL6082 T6 (1,136 Kg/m)

