

# ALUMINUM FOLDING SLIDE ASSEMBLY KIT FOR REAR DOORS REF. 029-007-066-001



COMPONENTS



made in Spain

## 1. KIT DESCRIPTION 029-007-066-001

This element is designed to be mounted on the inside of the rear doors of two book-type sheets of a semi-trailer with moving floor system.

This element is designed to cover and protect the gap between the tips of the planks and rear doors. Its two-part folding design allows access for cleaning and opening the doors with the system lowered or retracted



### MOUNTING

This system is mounted directly on the inside of the rear doors, by means of the bolted or welded fixing of the supplied hinges. Once the system is installed you can be assembled and disassembled by removing the screws from their fixing hinges.

### FUNCTIONING

The stirring drive is carried out manually, removing the fixing pins that keep the slips in the open position.

Each of the slides can be folded independently and have a plate nylon that allows sliding and friction against the moving floor plates.

### UTILITY

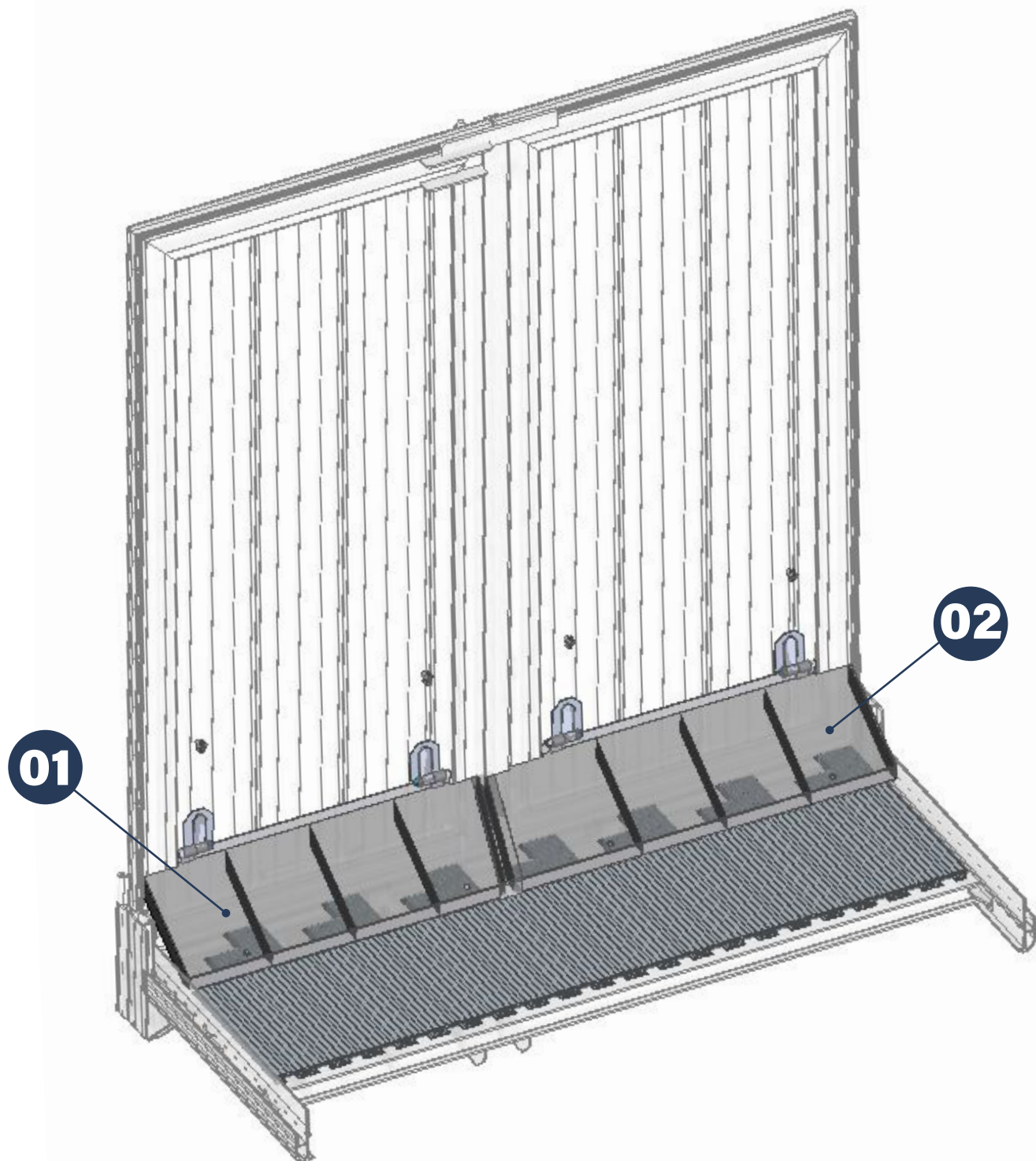
- Prevents load accumulation and compaction when the moving floor system is in load operation to shift to the front the load that is supplied from Continuously across the upper back.
- Protects the tips of the movable floor sheets against impacts.
- It can be folded down to access and clean the protected area.
- It can be quickly assembled and disassembled when necessary.

## THE PERFECT COMPONENT FOR YOUR MOVING FLOOR OF ANY BRAND AND MODEL

# MAIN COMPONENTS

## TECHNICAL CHARACTERISTICS

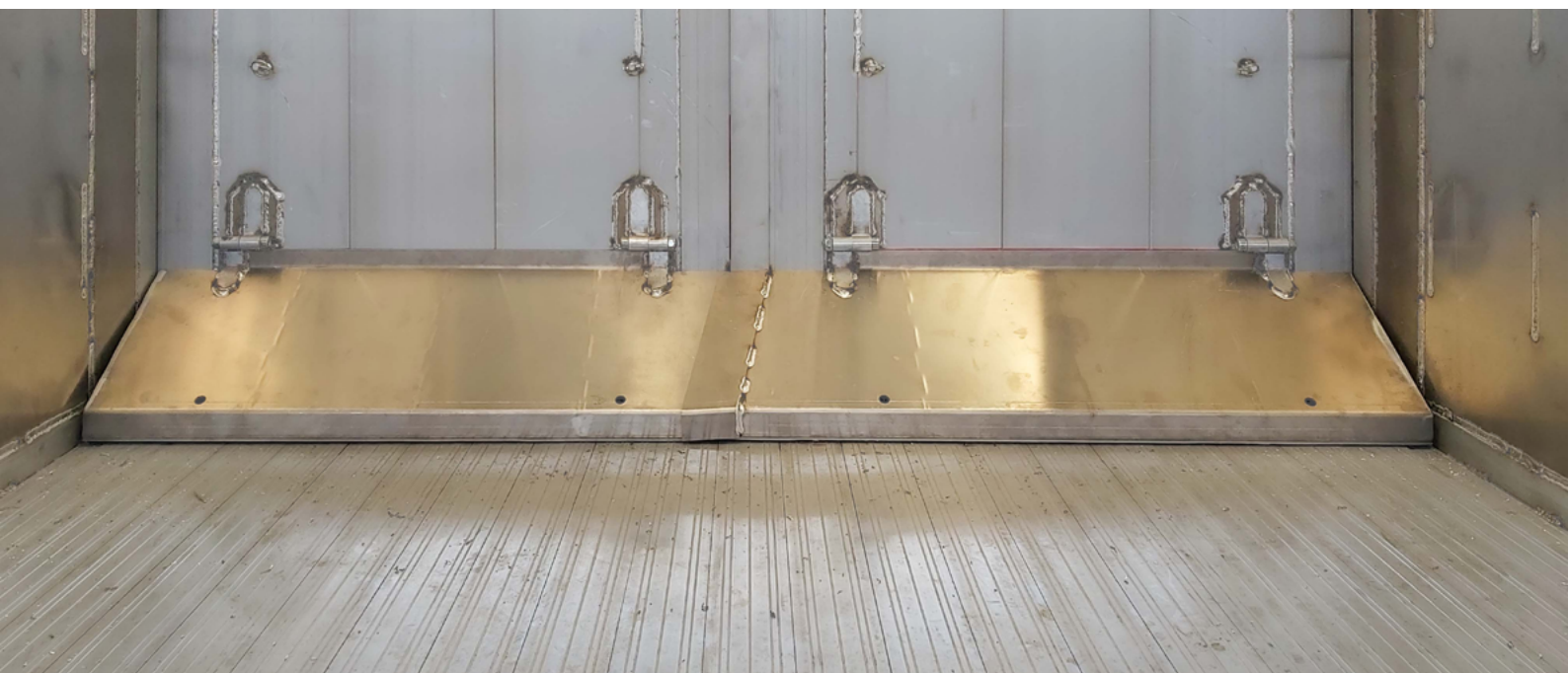
- Integral aluminum construction in 4 mm thick AL5754 H111 alloy sheet.
- Own weight: 15 kg



## KIT COMPONENTS 029-007-066-001

- |      |                   |                          |
|------|-------------------|--------------------------|
| 01 - | 029-007-066-2-001 | Right latch set (1 unit) |
| 02 - | 029-007-066-2-002 | Left latch set (1 unit)  |





**Phone**  
+34 967 141 434

**Email**  
[ofertas@grupo-alite.eu](mailto:ofertas@grupo-alite.eu)

© 2021 ALITE Factory and headquarters,  
PG. Industrial, CL De La Cierva, 14-20 PO Box 136,  
02600, Villarrobledo, Albacete, ESPAÑA

# 100% ALITE MANUFACTURING