



SO THAT YOU CAN TRANSPORT ANY GOODS

The ALITE semi-trailer with a walking floor and open box body with folding and removable sides that allows you to access cargo like a platform



e9*2007/46

8764 KPV

www.grupo-alite.net
TLF: 967 138 176 VILLARROBLEDO, ALBACETE, ESPAÑA

VERSATILITY



FOLDING SIDES AND SLIDING PILLARS

So that you can load large goods from the sides, all the sides are foldable and removable. The aluminum pillars are also sliding and removable to leave the sides clear if necessary for load access.

DON'T LOSE ANY CUSTOMERS

THE OPEN DE ALITE FAMILY IS SO VERSATILE THAT IT
GUARANTEES YOU MORE



MORE SPACE

With the OPEN range you have a half-canopy model with folding sides, a model with folding sides with removable hatches and an open platform model.

The great versatility of the OPEN family allows you to have a moving floor semi-trailer that fits your needs and those of your customers.

BIG VOLUME

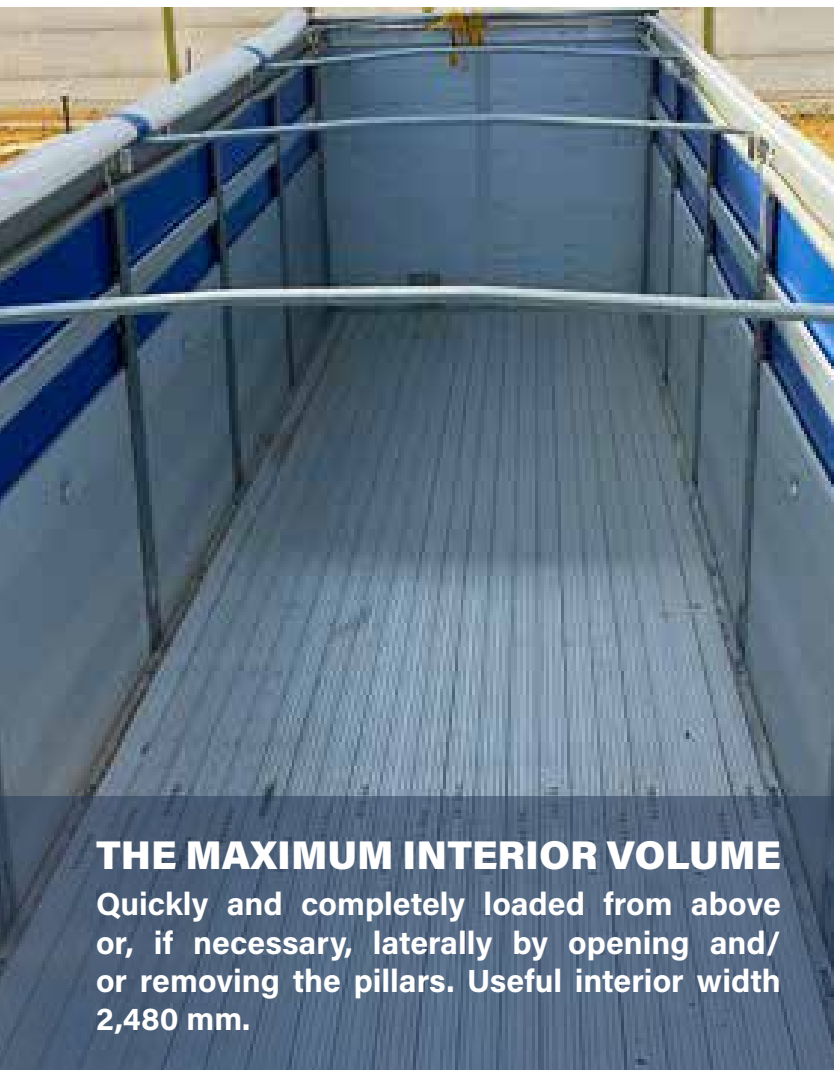


LIFTING ROOF

The vehicle is equipped with a hydro-pneumatically lifting roof system to enable you to load high goods from the sides. The combination of a low-section chassis and variable-height bodywork gives you the highest payload volume.

WITH ALITE YOU GET THE ACCOUNTS

WE OFFER YOU THE LOWEST COST PER CUBIC METER TRANSPORTED



LIGHT

A close-up photograph of a light fixture assembly mounted on a vehicle body. The fixture is made of aluminum and features a series of horizontal slats. The mounting brackets and struts are visible, showing the assembly process. A circular logo for ALTE is visible on the right side of the fixture.

MANUFACTURE IN ALUMINUM

The vehicle is almost entirely made of aluminum, with the exception of the mounting plate for the coupling pin and the suspension brackets together with their struts. These elements are assembled with double insulation by painting and an insulating polymer adhesive.

ALITE IS THE MANUFACTURER THAT OFFERS YOU THE LOWEST COST OF OPERATION
WE GIVE YOU THE HIGHEST LOAD CAPACITY

FUEL ECONOMY

Aluminum manufacturing allows us to offer you the lowest empty weight to reduce the cost per kilometre made due to the mass of the vehicle.



RESISTANT

The background image shows a factory floor with several long, silver aluminum extrusion beams laid out on a workbench. A red robotic arm with a cutting head is positioned over the beams. The scene is industrial, with various pipes and structural elements visible in the background.

ALUMINUM EXTRUSION BEAMS

The best aluminum welding is the one that is not done. For this reason, we assemble all the main structural profiles of direct extrusion aluminum in one piece without any welding. We can offer you the best possible finish; as well as a vehicle with the longest life span.

COLD CUT

The main beams of the chassis are cut by a cold cutting process using high pressure water (WaterJet). This avoids unwanted heating from other cutting or welding processes that reduce its resistance by altering the heat treatment of the aluminum alloy.



ALITE IS A SAFE INVESTMENT YOUR DURABLE WALKING FLOOR

SOLID CONSTRUCTION

The reinforcement bars in the pivot area of chassis coupling are welded and in addition machembrados. In this way the resistance of the joint does not fall solely on the welding process. With This results in greater fatigue resistance.



REINFORCED

All moving floor fixing cross members to the side panels of the body incorporates welded reinforcing bevels. In this way reinforces the construction of the complex.

RELIABLE



WE CONTROL ALL THE PRODUCT

We manufacture our own moving floor machine. This is why we can offer you the greatest guarantee. Its design is aimed at reducing maintenance and repair costs. We also guarantee the use of standard sealing and control elements that can be easily and economically replaced anywhere.



REDUCES EFFORT

Our innovative and unique system of bracing and fixing the axles to the chassis beams is optimised to reduce the forces and loads transmitted to the chassis as much as possible. The large height of the chassis section considerably reduces the height of the suspension brackets, so that the loads being transmitted are minimal.

**SO ROBUST
AND RESISTANT
THAT WE CAN
OFFER YOU
THE BEST
GUARANTEE(*)**

8 YEARS WARRANTY ON BPW AXLES (5 + 3) ON-ROAD USE

+

4 YEARS WARRANTY ON THE CHASSIS STRUCTURE

+

2 YEARS WARRANTY ON THE WALKING FLOOR MACHINE

WALKING FLOOR SUITABLE FOR THE PASSAGE OF VEHICLES

The minimum distance between struts and the installation of sliding blocks with a base tube on all struts improves the sliding of the slats and allows for the passage of forklifts.



**WITH ALITE YOU INCREASE YOUR INCOME
YOUR WALKING FLOOR WITH THE LOWEST MAINTENANCE COST**

(*)You can consult our guarantee Policy at www.grupo-alite.eu

ALITE



20th CENTURY

ALITE

000



21st CENTURY

OPEN SEMITAULINER

Our design, manufacture and total control of the vehicle's manufacture allows us to offer you the greatest possibilities for personalisation; according to the type of load, use and preferences. This model of the OPEN family has a walking floor platform with folding aluminum sides and a semi-canopy type construction with a lifting roof.



The OPEN Semitaulliner has a continuous chassis with a 150 mm neck height for a fifth wheel height of your tractor unit of **1150 to 1200 mm**. Load maximum in the coupling pin (KP) of 12 tn.



You will be able to configure the vehicle with the multiple options available to adapt it to your purpose according to your preferences. Our proposal starts from a base vehicle with several selectable options. We are a flexible factory with full autonomy in the production of all components. You can see the complete information with ALL the possibilities in its technical data sheet.

YOU CAN FIND THE TECHNICAL SHEET ON OUR WEBSITE WWW.GRUPO-ALITE.EU

**FOR DRY BULK AND/OR PALLETIZED LOADS.
AGRICULTURAL, INDUSTRIAL, LIGHT WASTE SECTOR...**

YOUR VERSATILE ALITE WALKING FLOOR SEMI-WHITE BOX



Open box construction in half-canvas with a free lateral passage height of 2200 mm and a maximum ceiling elevation of +800 mm manually or hydropneumatically. Six (6) anodized aluminum side panels with a height of 1,300 mm per side. Ten (10) sliding aluminum pillars with three (3) locking claws for the side doors. Curved three-track aluminum top profile for the side curtains, roof and sliding pillars. Standard manual roll-up roof with drop on one side and fixed on the other.

**CHOOSE THE MODEL THAT BEST SUITS YOUR TRACTOR HEAD WITH
WHEELS ON THE SEMI-TRAILER 385/65 R22.5 OPTIONAL 385/55 R22.5**

THE BEST STANDARD EQUIPMENT



1 MANUAL ROLL-UP ROOF

Rolling Tarp Roof 680 g/ m² manual type with 300 mm drop on the side left in running order and fixed with ratchets on the side right.

2

BARRIER CANVAS

Assembled sliding tarpaulin on a telescopic bar inside.



3 SAFETY VALVE

Own manufactured hydraulic valve to avoid the problems caused by a wrong connection when exchanging the pressure hose by the return hose. It avoids breakdowns in the walking floor equipment.



4

INFORMATION DISPLAY

Panel for monitoring the parameters and warnings of the vehicle's braking system. It incorporates the scale function for the tridem.



5 BAYONETES

The bayonets for fixing the tarpaulin are made of stainless steel plate. They are mounted by screwing them to the profile of the tricycle.



6 DRAGGING LUGS

Two towing lugs at the rear bolted to the chassis beams.



7 MOVING FLOOR CONTROL PANEL

For the control of the moving floor is included:

- Control panel with panel and button panel
- Radio control
- Cable control



8 SPARE WHEEL HOLDER

Spindle type spare wheel holder bolted to the chassis.



THE BEST STANDARD EQUIPMENT

10 WEDGES OF THE PLANKS



Welded cast aluminum wedges.

9 DRIVER PROTECTION

Folding protection for the drivers made of aluminum integrated in the rear of the vehicle to protect the drivers.

11 ACCESS LADDER

Retractable staircase with three steps located at the back to facilitate access to the interior.



www.grupoalite.com
TLF: 967 138 176 VILLARROBLEDO, ALBACETE (ESPAÑA)

ARCHES AND PILLARS

12

ARCHES

System of 7 arches in 1" galvanised round iron tube with solid pins at the ends. Double point at the centre of 100 mm in the central 500 mm.



INTERNAL BARS AND CABLES

Removable inner reinforcement bars between the pillars and steel cables with inner fastening on the right side and outer fastening on the left side. The side cables can be released from the outside of the vehicle.



13



THE BEST STANDARD EQUIPMENT



COMPLETE AND SPLIT BOLTS

14

All the bars of the locks have an aluminum protection profile. The bolts on the left door leaf are made in two parts with double handles so that the upper crosshead can be opened with the door leaf itself.



SEMI-COVERED BOX SYSTEM

15

Pre-bent aluminum three-track top profile system for the movement of the trolleys and side curtains. Possibility of Sliding roof installation.

Side mounting of six (6) aluminum sides and five (5) pillars of aluminum with double lever for side opening and release for lateral displacement of the same.

A single lower box on the side and a single box in the middle leaving two holes of equal height for the installation of two (2) Stackable 140 mm.

16

FOLDING SIDES

Sides in anodised aluminum table, 1,300 mm high. Construction with 7 boards and lateral closing profiles with 3 closing nails with the pillars. Site (7) TIR-type hinges with screwed-in zinc-coated male and aluminum forged female welded to the strip profile. Rubber seals all around the perimeter.



BODYWORK



17

SIDE CURTAIN TENSIONER

Side curtains with four (4) tensioners, two (2) in the rear and two (2) in the front; all ratchet type. You can open the side curtain from the front or from the rear indistinctly.



OPEN CLEAR

Our design, manufacture and total control of the vehicle's manufacture allows us to offer you the greatest possibilities for personalisation; according to the type of load, use and preferences. This model of the OPEN family has a walking floor platform with folding aluminum sides and removable supplements. All the elements of the rear and side enclosures are removable with the possibility of leaving the vehicle in a platform configuration.



The OPEN Clear model has a continuous chassis with a 150 mm high neck for a fifth wheel height of your tractor unit of 1,150 to 1,200 mm. Maximum load on the coupling pin (KP) is 12 tonnes.



You can configure the vehicle with the multiple options available to adapt it to your purpose according to your preferences. Our proposal is based on a base vehicle with several selectable options. We are a flexible factory with complete autonomy in the production of all components. You can see the complete information with ALL the possibilities in its technical data sheet.

YOU CAN FIND THE TECHNICAL SHEET ON OUR WEBSITE WWW.GRUPO-ALITE.EU

**FOR DRY BULK AND/OR PALLETIZED LOADS.
AGRICULTURAL, INDUSTRIAL, LIGHT WASTE SECTOR...**

YOUR OPEN BOX WITH FOLDING SIDES AND WALKING FLOOR ALITE CONVERTIBLE INTO A SMOOTH PLATFORM



Open box construction with hinged sides and supplements. Six (6) 1,300 mm high sides and six (6) 600 mm removable anodised aluminum supplements. Ten (10) fixed aluminum pillars with three (3) door locks sides. Standard canvas-type roof suspended on steel cables .

**CHOOSE THE MODEL THAT BEST SUITS YOUR TRACTOR WITH
WHEELS ON SEMI-TRAILER 385/65 R22.5 OPTIONAL 385/55 R22.5**

THE BEST STANDARD EQUIPMENT



1 SUSPENDED TYPE CANVAS CEILING

680 g/m² canvas roof, suspended with steel cables and tensioning ratchets. Telescopic horn system for tensioning and hanging the tarpaulin.

2

SWING CLOTH

Assembled sliding tarpaulin on a telescopic bar inside.



3 SAFETY VALVE

Own manufactured hydraulic valve to avoid problems caused by a wrong connection when exchanging the pressure hose for the return hose. It avoids breakdowns in the walking floor equipment.



4

INFORMATION DISPLAY

Panel for monitoring the parameters and warnings of the vehicle's braking system. It incorporates the scale function for the tridem.



5

DRAWER FOR SUPPLEMENTS

The vehicle is equipped with an aluminum box for transporting the dismantled aluminum inserts.

The drawer is integrated into the lifeguard and is removable and incorporates a lower support for the arches.



DRAGGING LUGS

6

Two towing lugs at the rear bolted to the chassis beams.



7

MOVING FLOOR CONTROL PANEL

For the control of the moving floor is included:

- Control panel with panel and button panel
- Radio control
- Cable control



SPARE WHEEL HOLDER

8

Spindle type spare wheel holder bolted to the chassis.



THE BEST STANDARD EQUIPMENT

10 WEDGES OF THE PLANKS



Welded cast aluminum wedges.

9 DRIVER PROTECTION

Folding protection for the drivers made of aluminum integrated in the rear of the vehicle to protect the drivers.

11 ACCESS LADDER

Retractable staircase with three steps located at the back to facilitate access to the interior.



www.grupo
TLF: 967 138 176 VILLARROBLEDO, ALBACETE, ESPAÑA

ARCHES AND PILLARS



INTERNAL CABLES

12

Steel cables with inner fastening on the right side and outer fastening on the left side.



ARCHES

13

System of 7 arches in 1" galvanised round iron tube with solid pins at the ends. Double point at the centre of 100 mm in the central 500 mm.



THE BEST STANDARD EQUIPMENT



COMPLETE AND SPLIT BOLTS

14

All the bars of the locks have an aluminum protection profile. The bolts on the left door leaf are made in two parts with double handles so that the upper crossbeam can be opened with the door leaf itself.



OPEN BOX SYSTEM WITH FOLDING SIDES

15

Assembly of six (6) aluminum sides and five (5) pillars aluminum with double lever for opening the side and unlocking for disassembly.

A single lower box on the side and a single one in the middle leaving two holes of equal height for the installation of two (2) Stackable 140 mm.

16

FOLDING SIDES

Sides in anodized aluminum table, 1,300 mm high. Construction with 7 boards and lateral closing profiles with 3 closing nails with the pillars. Site (7) TIR-type hinges with screwed-in zinc-coated male and aluminum forged female welded to the strip profile. Rubber seals all around the perimeter.



17

TELESCOPIC FRONT HORNS

The suspended tarpaulin system has two telescopic front horns so that the tarpaulin can be hung with or without side extensions. The rear bayonet has two fixing positions.



BODYWORK

OPEN NAKED

Our design, manufacture and total control of the vehicle's manufacture allows us to offer you the greatest possibilities for personalisation; according to the type of load, use and preferences. This model of the OPEN family has an open moving floor platform.



The OPEN NAKED model has a continuous chassis with a 120 mm high neck for a fifth wheel height of your Tractor head from 1.000 to 1.050 mm. Maximum load on the pivot 12 tonne coupling (KP).



You can configure the vehicle with the multiple options available to adapt it to your purpose according to your preferences. Our proposal is based on a base vehicle with several selectable options. We are a flexible factory with complete autonomy in the production of all components. You can see the complete information with ALL the possibilities in its technical data sheet.

YOU CAN FIND THE TECHNICAL SHEET ON OUR WEBSITE WWW.GRUPO-ALITE.EU

CLEAR LOADING PLATFORM FOR ALL TYPES OF LOADS

YOUR PLATFORM WITH A WALKING FLOOR ALITE WITH THE LOWEST HEIGHT TO THE GROUND

**WE OFFER YOU THE HIGHEST LOAD CAPACITY.
HEIGHT OF THE FRONT / BACK PLATFORM: 1,250 / 970 mm (*)**



Integral aluminum construction, movable floor platform type of dimensions 13,600 x 2,550 mm with a front folding base of 300 mm.

Manual folding front cover to extend the capacity of load and protect the sheets at the front.

NOTE (*): With a fifth wheel height of 1,000 mm and 355/50 R22.5 tyres.

**CHOOSE THE MODEL THAT BEST SUITS YOUR TRACTOR WITH
WHEELS ON THE SEMI-TRAILER 385/55 R22.5 OPTIONAL 355/50 R22.5**

THE BEST STANDARD EQUIPMENT

1

INFORMATION DISPLAY

Panel for monitoring the parameters and warnings of the vehicle's braking system. It incorporates the scale function for the tridem.



2

MOVING FLOOR CONTROL PANEL

For the control of the moving floor is included:

- Control panel with panel and button panel
- Radio control
- Cable control



SAFETY VALVE

3

In-house hydraulic valve to avoid problems caused by incorrect connection when exchanging the pressure hose for the return hose. Breakdowns in the walking floor equipment are avoided.



SPARE WHEEL HOLDER

4

Spindle type spare wheel holder bolted to the chassis.



ACCESS STAIRS

5

Retractable staircase of three steps located at the rear to facilitate access to the interior.

WEDGES OF THE PLANKS

Welded cast aluminum wedges.



PILOT PROTECTION

7

Folding protection for the drivers made of aluminum integrated in the rear of the vehicle to protect the drivers.

TOWING LUGS

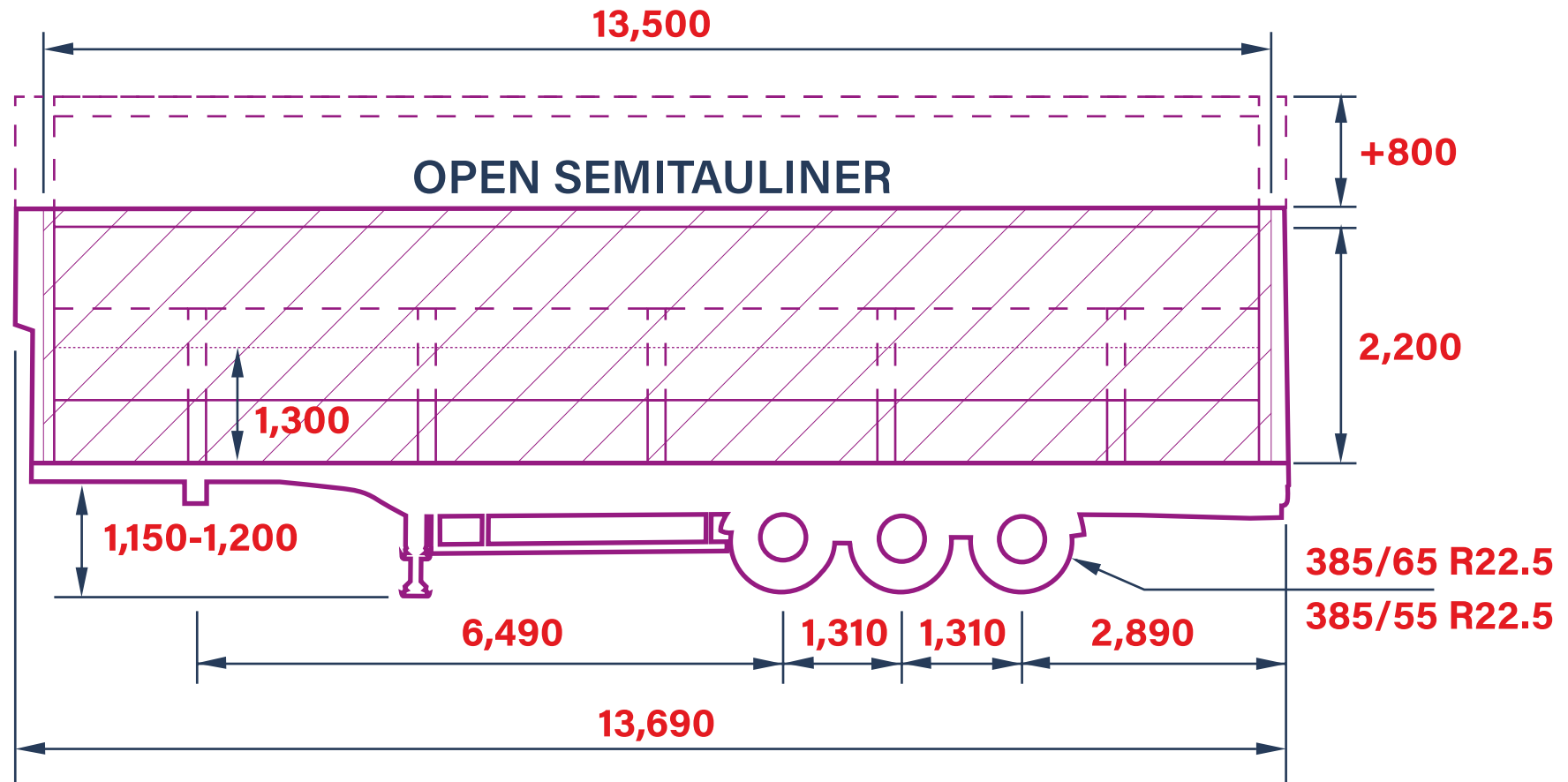
8

Two towing lugs at the rear bolted to the chassis beams.

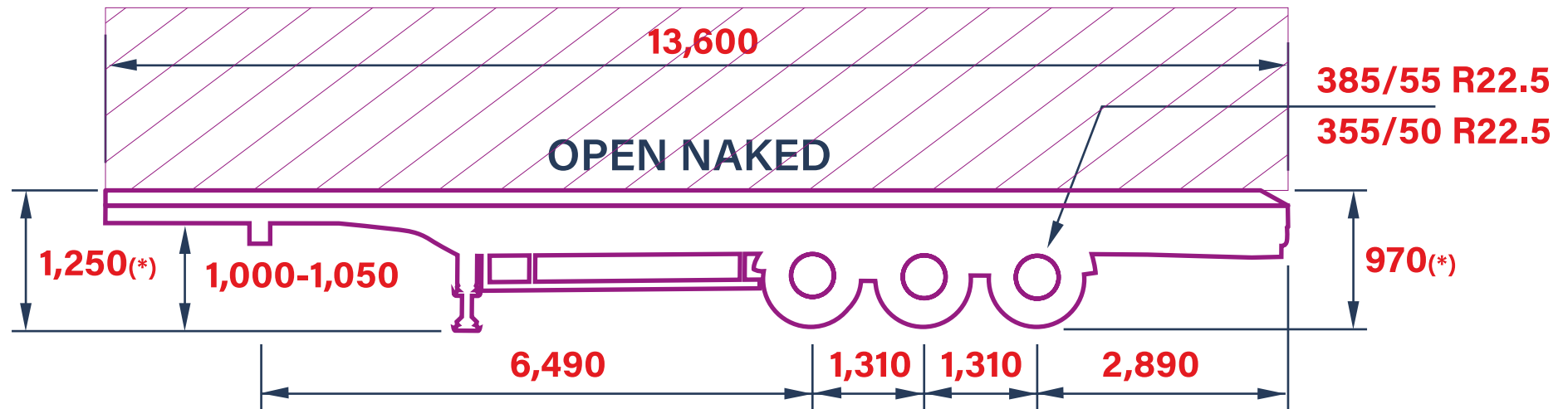
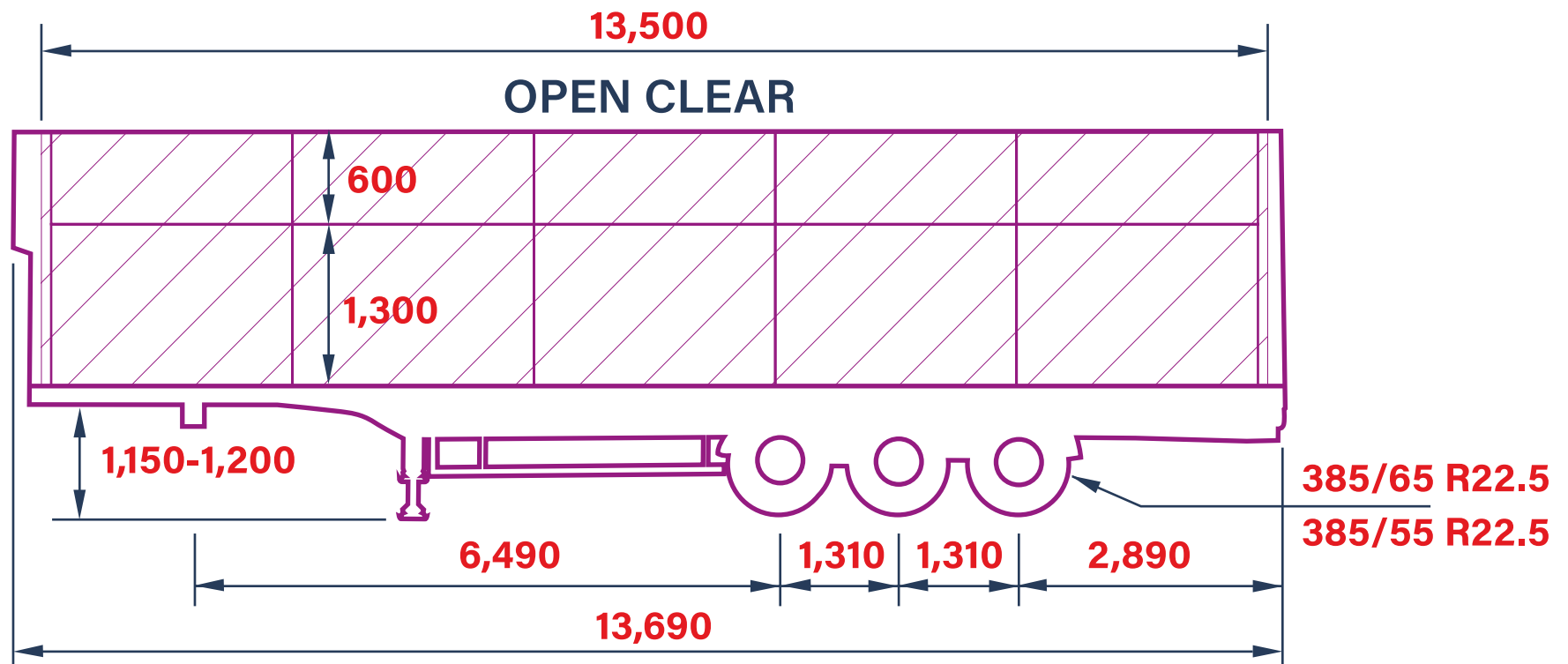


SUMMARY OF CHARACTERISTICS

Here is a summary of the most characteristic values of each model in the OPEN family:



Note: All measurements in mm



(*): Value valid with 355/50 R22.5 tyres and height of 5th wheel 1000 mm
 Note: All measurements in mm

OPEN FAMILY OPTIONS



STAINLESS STEEL REAR SLIDE PLATE



ALUMINUM LEGS WITH MANUAL EXTENSION



EXTENSIBLE STEEL ANTI-STOP



ADD 4 RINGS TO THE CHASIS FOR THE MOORING OF THE VEHICLE ON BOARD



RECESSED RINGS

WASHING SYSTEM



REAR DRAWER FOR ACCESSORIES



BPW AIRSAVE SELF-PUMPING SYSTEM



CUSTOMIZED REAR OPTICAL GROUPS

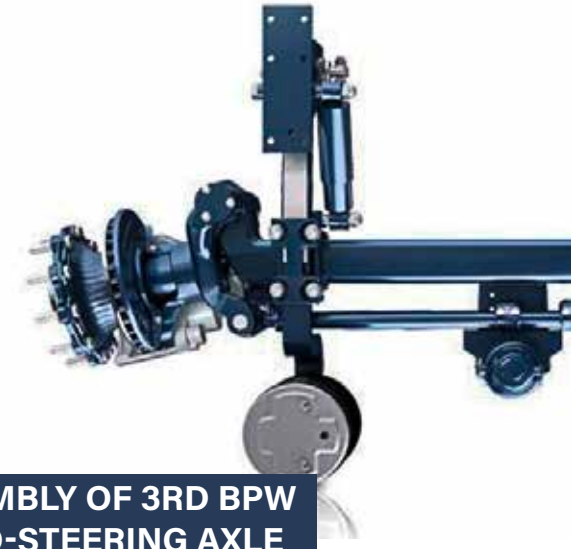


ACCESSORIES

SEMITAULINER AND CLEAR OPTIONS



REAR DRAWER BETWEEN THE CHASSIS



ASSEMBLY OF 3RD BPW
AUTO-STEERING AXLE
WITH BREAK



REAR REGISTRATION



GALVANIZED PLATE INTERIOR REINFORCEMENT 400 OR 1000 MM IN HEIGHT



BODYWORKS AND OTHERS

SEMITAULINER CEILINGS



SLIDING ROOF WITHOUT ALUMINUM ARCHES



We can offer you two other solutions for the roof of your OPEN Semitaulliner semi-trailer:

- Aluminum sliding roof with folding rear carriage.
- Manual roll-up roof without side drop. Fixed on one side and with lateral mooring by means of a 1/2" tube fitted into a slot in the tricycle.

ROLL-UP ROOF WITHOUT LATERAL FALL





SEMITAULINER INTERIOR CURTAIN

In the OPEN SEMITAULINER model we can also offer you an interior roller blind that allows you to load bulk goods up to the full height of the vehicle and which are compatible with the lifting roof. If necessary, it is possible to collect.



CLEAR DOOR WITH OVERALL HEIGHT

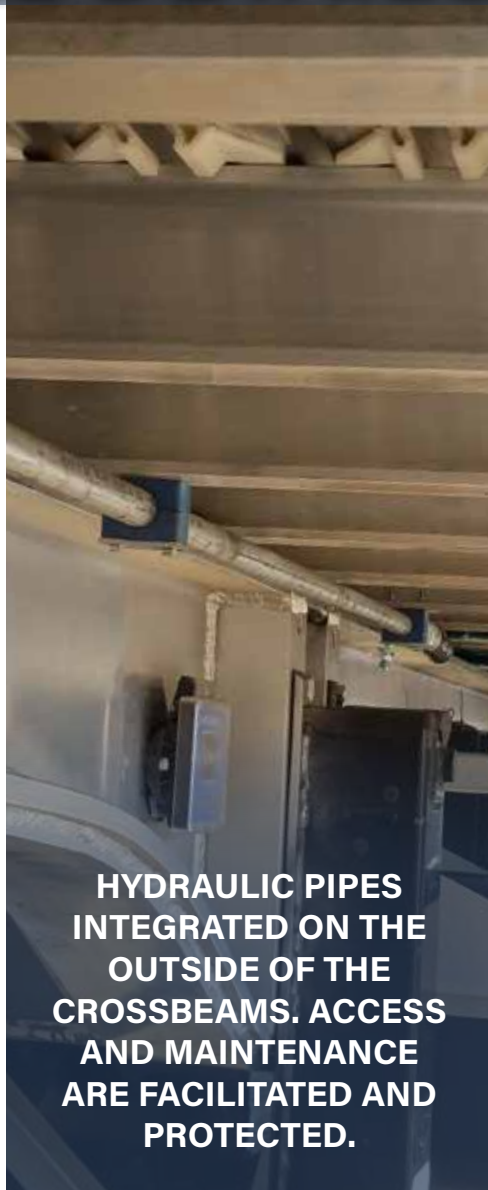
When you normally use the vehicle with the supplements fitted, the OPEN CLEAR model allows you to fit full height double-leaf rear doors to facilitate rear access for goods.



OUR PASSION FOR THE SMALL DETAILS



MINIMEX PRESSURE PORTS INTEGRATED IN THE FRONT SAFETY VALVE TO CHECK THE OPERATION OF THE SYSTEM.



HYDRAULIC PIPES INTEGRATED ON THE OUTSIDE OF THE CROSSBEAMS. ACCESS AND MAINTENANCE ARE FACILITATED AND PROTECTED.



WALKING FLOOR MACHINE WITH INTEGRATED FRAME TO AVOID PRESSURE LOSSES CAUSED BY DEFORMATION IN THE CENTRAL AREA OF THE BODYWORK.



INTEGRAL-TYPE MUDGUARDS WITH INCORPORATED SKIRTS AND HIDDEN FASTENING TUBES.





FACTORY:

PG IND. CL De la Cierva 16-20
02600 Villarrobledo, Albacete
SPAIN

Phone: +34 967 13 81 76
ofertas@grupo-alite.eu

MORE INFORMATION IN:
www.grupo-alite.eu/en

