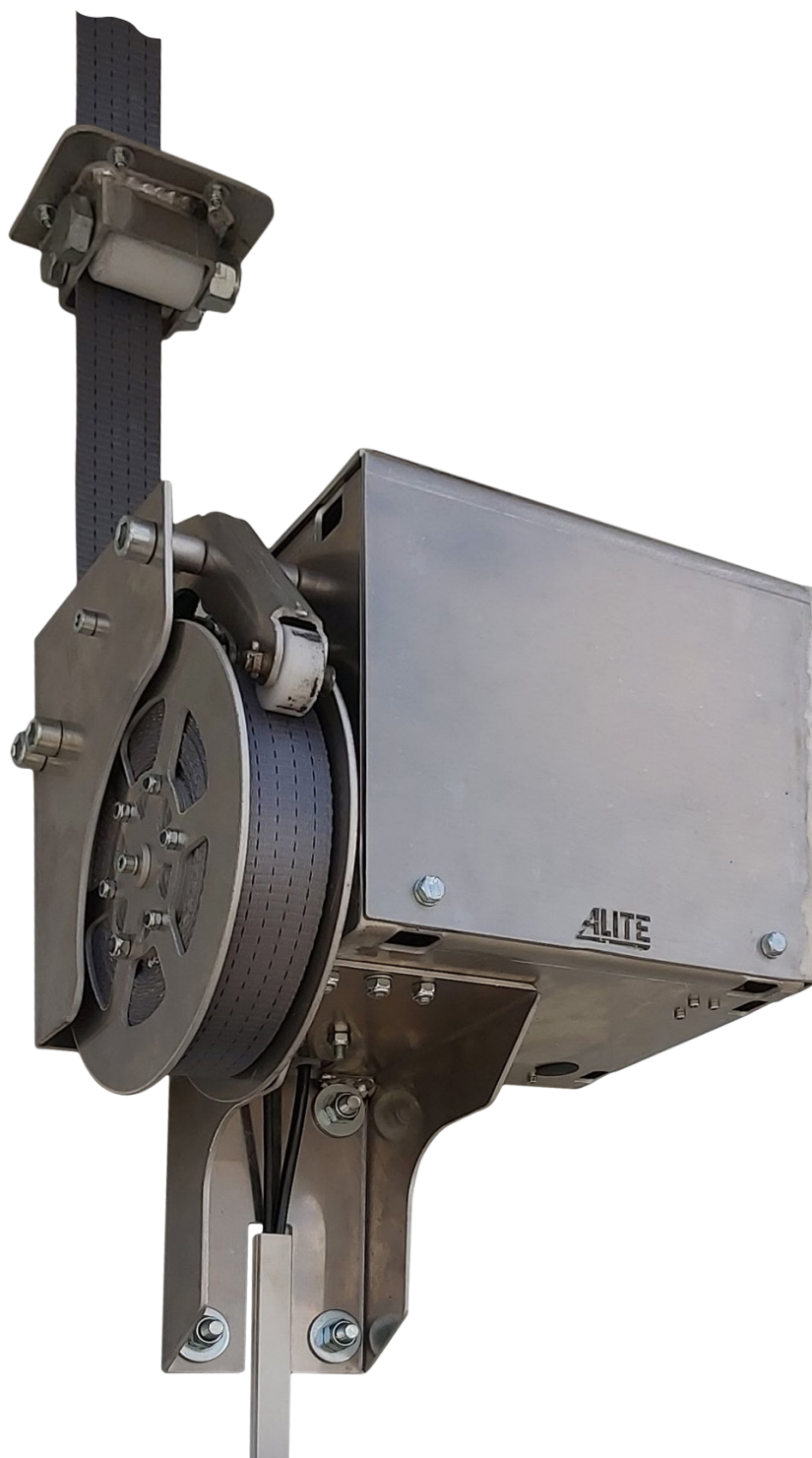




ALITE PNEUMATIC ROLLER KIT FOR INSIDE WALL REF. 042-018-001



COMPONENTS



made in Spain

1. DESCRIPTION 042-018-001

This system is designed to be mounted on a moving floor semi-trailer with inside wall. It allows the connection of a belt with the loose interior sweeper canvas or sliding sweeper front for quick and simple collection once the unloading process is finished.

Its operation is pneumatic and its drive is manual and electric, and can be activated from the reel itself or remotely with an electrical signal.



MOUNTING

This system is bolted directly to the front of the vehicle. The kit includes two sets of rollers to guide the belt through the front gangway and the front of the vehicle itself. The rollers can be mounted by riveting or screwing.

OPERATION

For its operation it only requires a pneumatic supply of 4-10 bar, which can be taken from the vehicle's own air suspension system.

The belt connected to the tarpaulin or front sweeper unwinds as the moving floor unloads the goods and this moves the tarpaulin or front sweeper towards the rear of the vehicle. Once the unloading process has been completed, the roll-up drive allows the tarpaulin or sweeper to be moved to the front of the vehicle by means of its drive.

ADVANTAGES COMPARED TO OTHER ELECTRICAL AND/OR HYDRAULIC SYSTEMS

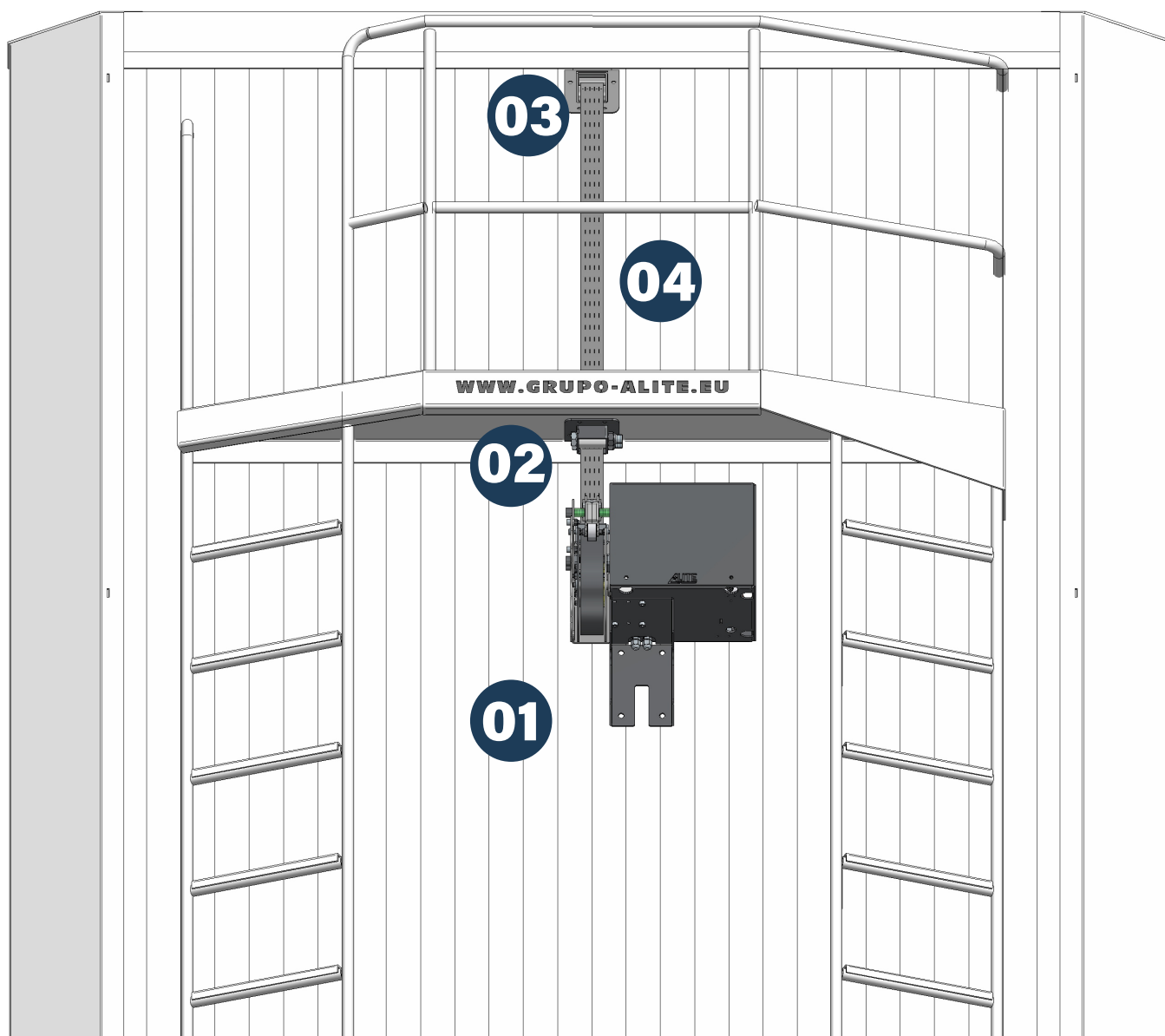
- Clean and simple assembly.
- Easy to install.
- Lightweight due to its all-aluminium construction.
- Suitable for outdoor installation.
- Operates independently of the vehicle's hydraulic system. No modification of the vehicle's hydraulic circuit necessary.
- No need for power supply cable to the power pack batteries.
- No need for electric limit switches.
- It can be left in the final pick-up position without problems of consumption or effort.
- The speed and torque of the system can be adjusted.
- Low maintenance, as the system has its own lubrication and filtering unit.

THE PERFECT COMPONENT FOR YOUR MOVING FLOOR OF ANY BRAND OR MODEL

MAIN COMPONENTS

TECHNICAL FEATURES

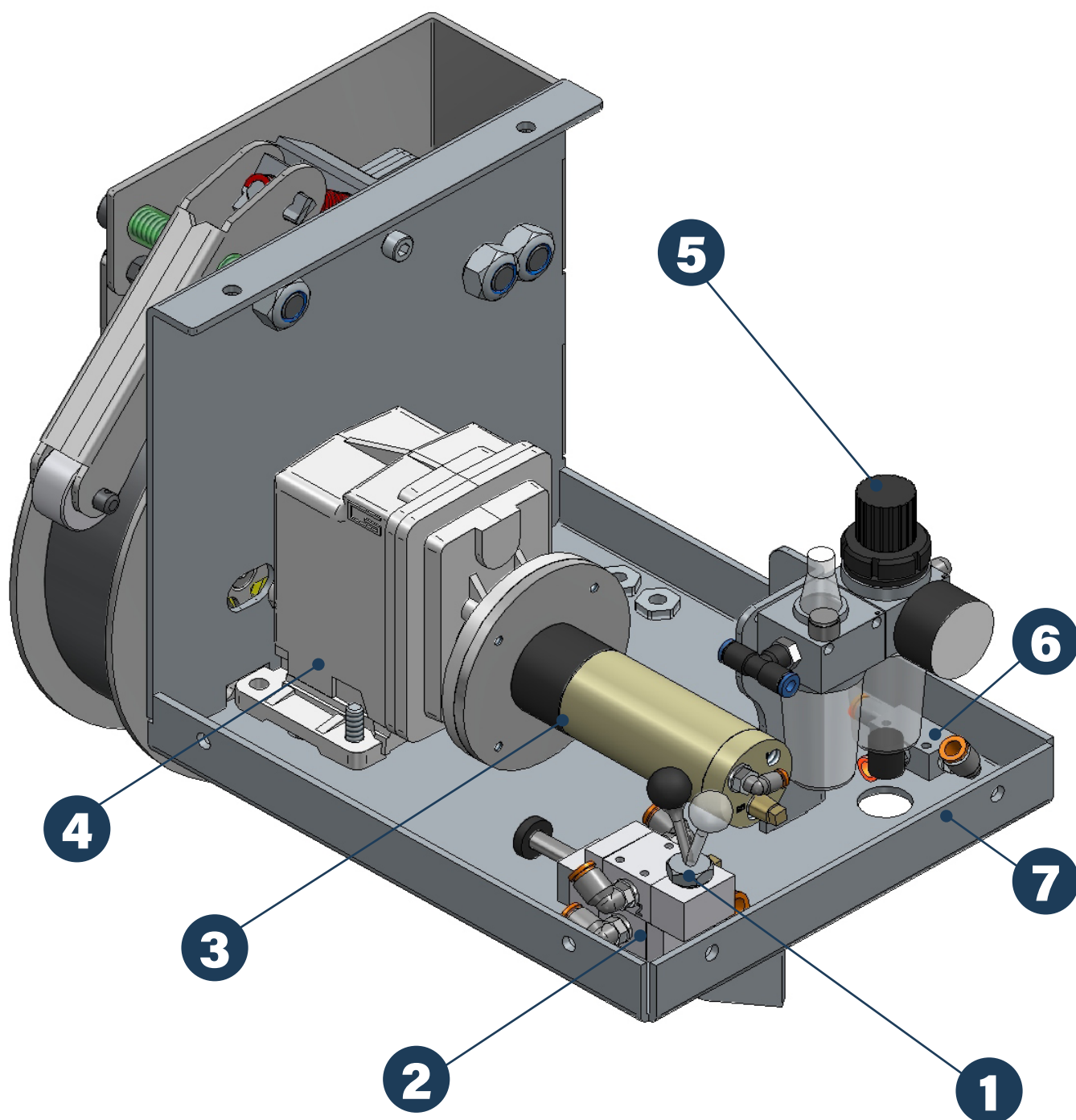
- Pneumatic supply: 4 - 10 bar. Regulator, filter and lubrication unit included.
- Adjustable torque.
- Manual operation with monostable lever and electrical operation at 12 or 24 VDC.
- Pneumatic power: 360 W.
- Compact aluminium coaxial gearbox.
- All-aluminium construction. Low weight: 6.5 kg.
- Pneumatic supply connection: polyamide tube 8 x 6 mm.
- Power supply connection: 2x1 mm² hose.



KIT COMPONENTS 042-018-001

- | | | |
|------|---------------|---|
| 01 - | 042-018-2-001 | Complete pneumatic hose reel (1 pc.) |
| 02 - | 042-018-2-002 | Walkway guide rollers kit (1 pc.) |
| 03 - | 042-018-2-003 | Front passage guide roller kit (1 pc.) |
| 04 - | 042-018-1-120 | Tape 50 mm for reel, 17 m total (1 pc.) |

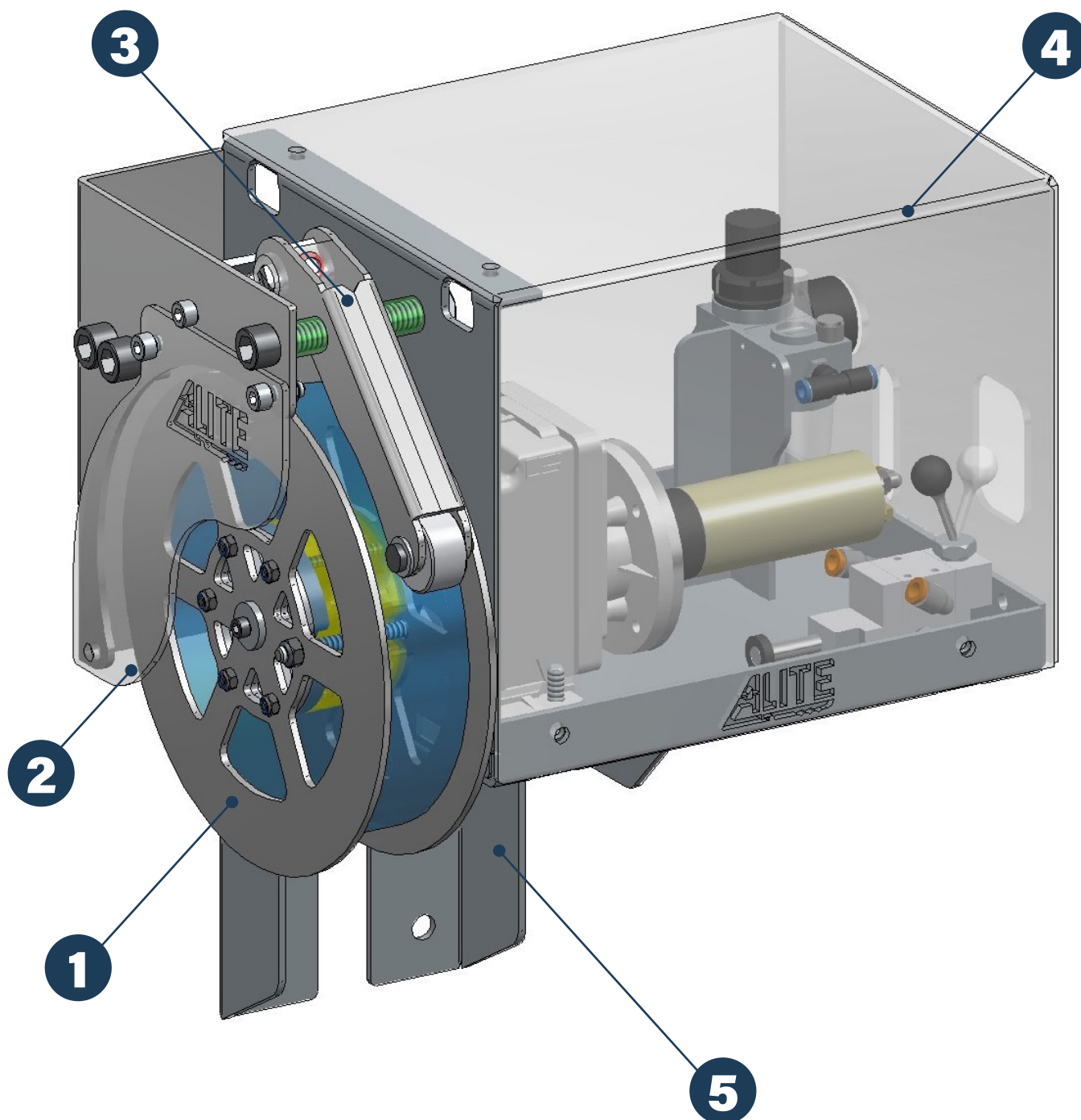
01. REF 042-018-2-001 Complete pneumatic winder



SPARE PARTS AVAILABLE FROM REF. 042-018-2-001

1 -	022-003-091	3 way monostable lever valve (1 pc.)
2 -	022-003-092	3 way monostable solenoid valve (1 pc.)
3 -	022-011-002	Pneumatic motor 360 W AD flange, shaft d14 g6 (1 pc.)
4 -	022-011-100	Coaxial gearbox 1:23.51 D16 GR. 63 (1 pc.)
5 -	022-003-2-001	Regulator unit 0-12 bar + filter + lubrication (1 pc.)
6 -	022-003-049	Circuit selector valve (1 pc.)
7 -	042-018-2-012	Base structure pneumatic hose reel (1 pc.)

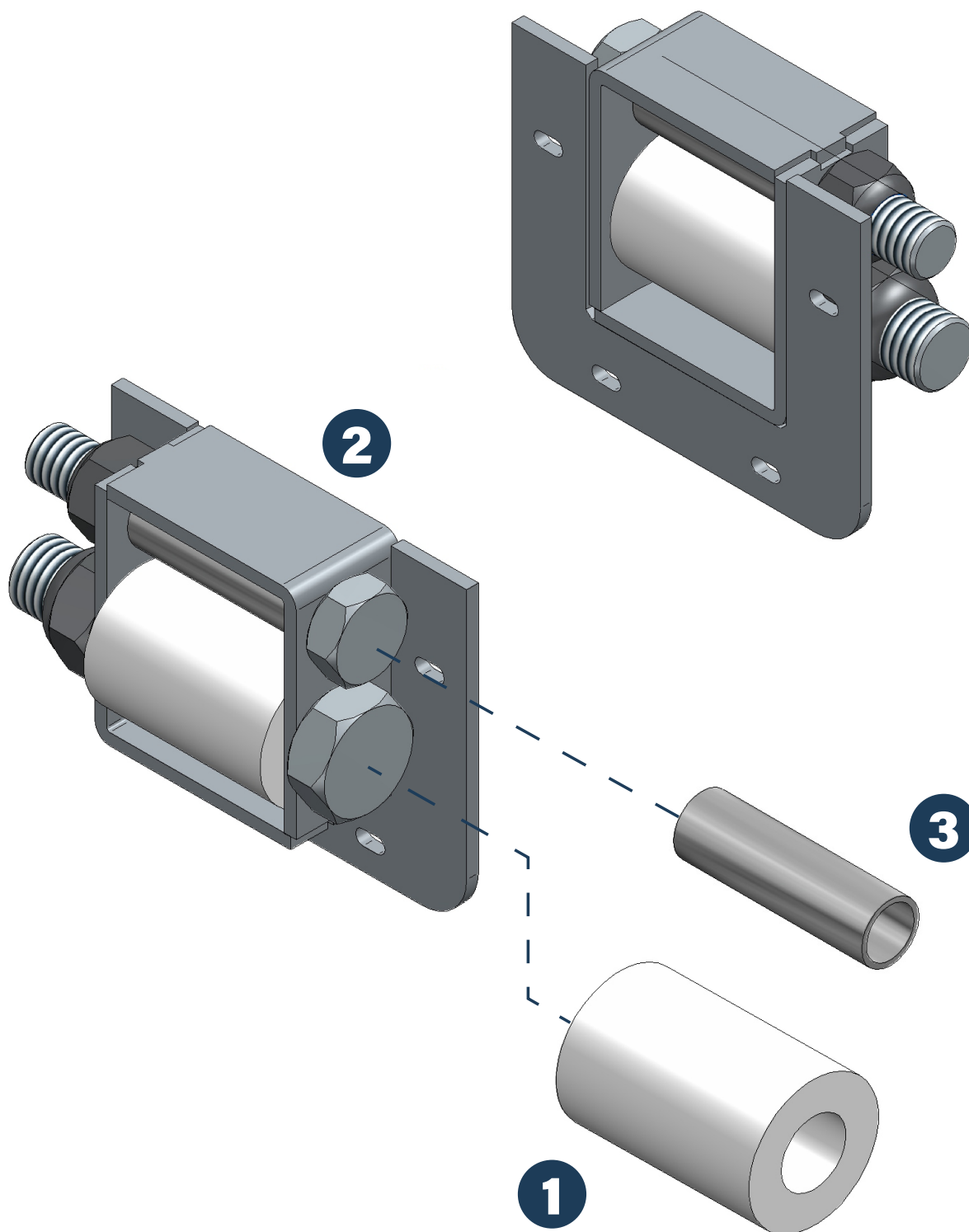
01. REF 042-018-2-001 (continued)



SPARE PARTS AVAILABLE FROM REF. 042-018-2-001 (continued)

- | | | |
|-----|---------------|---|
| 1 - | 042-018-2-015 | Aluminum drum, pneumatic rewinder (1 pc.) |
| 2 - | 042-018-1-056 | Outer cover for drum structure (1 pc.) |
| 3 - | 042-018-2-020 | Reel belt tensioning cam assembly (1 pc.) |
| 4 - | 042-018-1-060 | Aluminum rewinder cover (1 pc.) |
| 5 - | 042-018-1-057 | Reducer base support (1 pc.) |

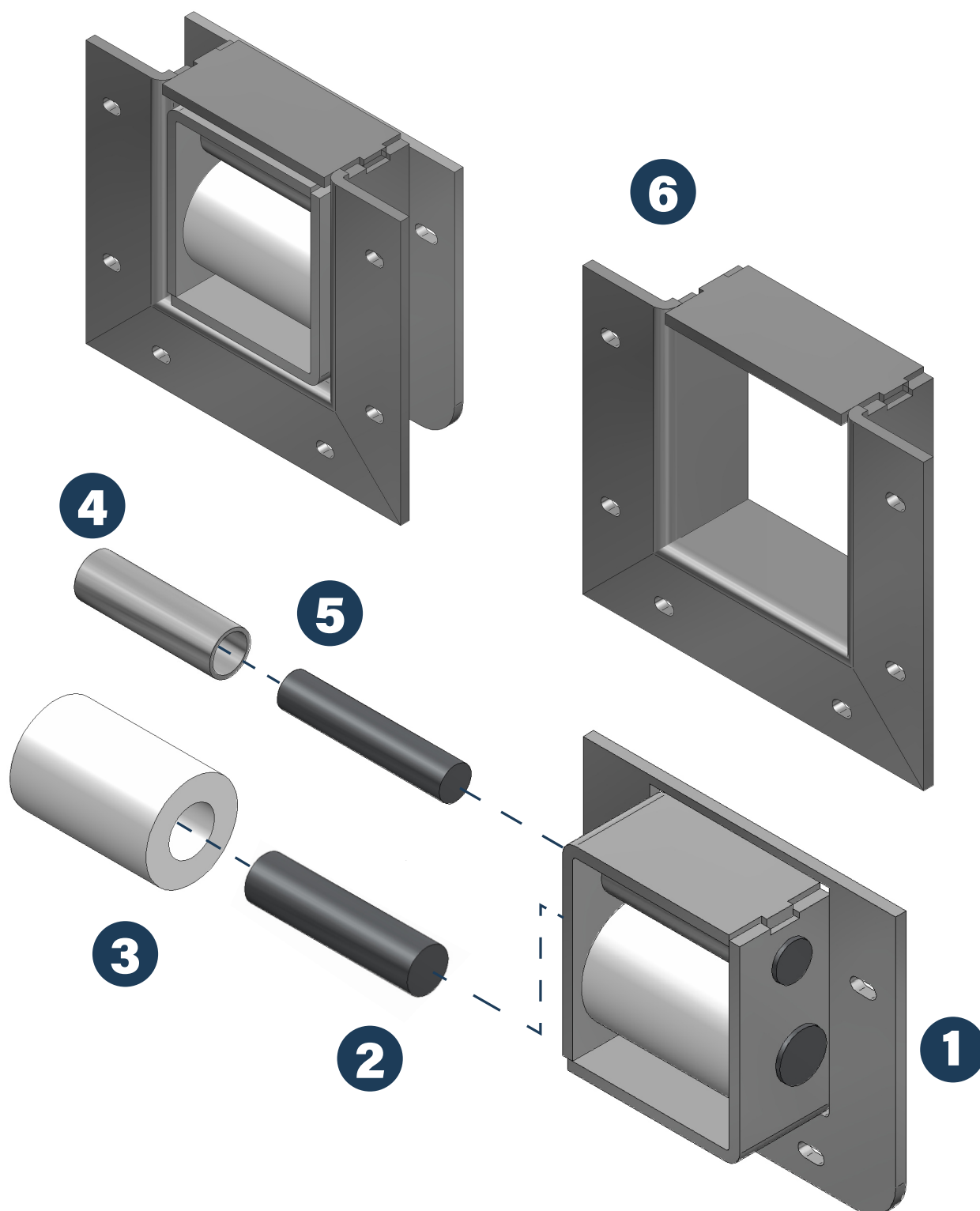
02. REF 042-018-2-002 Walkway Guide Roller Kit



SPARE PARTS AVAILABLE FROM REF. 042-018-2-002

- | | | |
|-----|---------------|--|
| 1 - | 042-018-1-086 | Nylon bushing L60 D40x20 (1 pc.) |
| 2 - | 042-018-2-035 | Aluminium frame with rollers kit for gangway (1 pc.) |
| 3 - | 042-018-1-089 | Bushing tube Al rollers for front (1 pc.) |

03. REF 042-018-2-003 Bodywork front passage roller kit



SPARE PARTS AVAILABLE FROM REF. 042-018-2-003

- | | | |
|-----|---------------|--|
| 1 - | 042-018-2-033 | Frame Al base front roller kit (1 pc.) |
| 2 - | 042-018-1-088 | Solid shaft d18 stainless steel nylon roller (1 pc.) |
| 3 - | 042-018-1-086 | Nylon bushing L60 D40x20 (1 pc.) |
| 4 - | 042-018-1-089 | Sleeve 02 tube Al rollers for front end (1 pc.) |
| 5 - | 042-018-1-090 | Solid shaft d14 stainless steel pin for roller (1 pc.) |
| 6 - | 042-018-2-030 | Inner frame roller kit for front panel (1 pc.) |



Phone
+34 967 141 434

Email
ofertas@grupo-alite.eu

© 2021 ALITE Factory and headquarters,
PG. Industrial, CL De La Cierva, 14-20 PO Box 136,
02600, Villarrobledo, Albacete, ESPAÑA

100% ALITE MANUFACTURING